

Open Charge Point Protocol

Interface description between Charge Point and Central System

Document Identifier	010.030.007
Document Version	1.5
Document Status	FINAL
Document Release Date	8-6-2012

Current copyright e-laad.nl 2010, 2011, 2012

All rights reserved. This document is protected by international copyright law and may not be reprinted, reproduced, copied or utilized in whole or in part by any means including electronic, mechanical, or other means without the prior written consent of e-laad.nl.

Version management by OCPP Steering Group.

Version History

Version	Date	Author	Description
1.0	19.10.2010	Franc Buve	Final version approved by e-laad.nl. Identical to version 0.12.
1.1	17.11.2010	Franc Buve	Removed change marks.
1.2	21.02.2011	Franc Buve	#302: Added lengths to string types. #171: typographic error fixed.
1.3	16.01.2012	Franc Buve	Draft for review by OCPP working group. Includes: CR-01 Authentication/authorisation lists CR-02 Interval meter readings CR-03 Charge point reservation CR-04 Generic data transfer CR-05 More detailed status notifications CR-06 Query configuration parameters CR-07 Timestamp in BootNotification mandatory CR-08 Response to StartTransaction.req with status other than Accepted is not clearly defined CR-09 Increase size of firmwareVersion in BootNotification
1.4	27.02.2012	Brendan McMahon Franc Buve	Final draft for approval by OCPP working group. Paragraphs and table rows with significant changes have been marked with a side bar.
1.5	26.03.2012 01.06.2012	Franc Buve	Incorporated review comments. Specification ready for release. Changed type of hash from integer to string[64].

Contents

1	Scope	9
2	Terminology and Conventions	10
2.1	Conventions	10
2.2	Definitions	10
2.3	Abbreviations	10
2.4	References	11
3	Introduction	12
3.1	General views of operation	12
3.2	Off-line behaviour	15
3.3	Local authorisation list	15
3.4	Parent id-tag	16
3.5	Reservations	17
3.6	Vendor-specific data transfer	17
3.7	Time zones	17
3.8	Case sensitivity	17
4	Operations Initiated by Charge Point	18
4.1	Authorize	18
4.2	Boot Notification	19
4.3	Data Transfer	20
4.4	Diagnostics Status Notification	21
4.5	Firmware Status Notification	21
4.6	Heartbeat	22
4.7	Meter Values	23
4.8	Start Transaction	24
4.9	Status Notification	25
4.10	Stop Transaction	26
5	Operations Initiated by Central System	27
5.1	Cancel Reservation	27
5.2	Change Availability	28
5.3	Change Configuration	29

5.4	Clear Cache.....	30
5.5	Data Transfer	31
5.6	Get Configuration.....	31
5.7	Get Diagnostics	32
5.8	Get Local List Version	33
5.9	Remote Start Transaction	34
5.10	Remote Stop Transaction	35
5.11	Reserve Now	35
5.12	Reset	37
5.13	Send Local List	38
5.14	Unlock Connector.....	39
5.15	Update Firmware	40
6	Messages	41
6.1	Authorize.req	41
6.2	Authorize.conf	41
6.3	BootNotification.req	41
6.4	BootNotification.conf	42
6.5	CancelReservation.req	43
6.6	CancelReservation.conf.....	43
6.7	ChangeAvailability.req	43
6.8	ChangeAvailability.conf.....	44
6.9	ChangeConfiguration.req	44
6.10	ChangeConfiguration.conf	47
6.11	ClearCache.req	47
6.12	ClearCache.conf.....	47
6.13	DataTransfer.req	47
6.14	DataTransfer.conf	48
6.15	DiagnosticsStatusNotification.req	48
6.16	DiagnosticsStatusNotification.conf.....	48
6.17	FirmwareStatusNotification.req	49
6.18	FirmwareStatusNotification.conf.....	49
6.19	GetConfiguration.req	49

6.20	GetConfiguration.conf.....	49
6.21	GetDiagnostics.req.....	50
6.22	GetDiagnostics.conf	50
6.23	GetLocalListVersion.req	51
6.24	GetLocalListVersion.conf	51
6.25	Heartbeat.req.....	51
6.26	Heartbeat.conf	51
6.27	MeterValues.req.....	52
6.28	MeterValues.conf	52
6.29	RemoteStartTransaction.req.....	52
6.30	RemoteStartTransaction.conf	53
6.31	RemoteStopTransaction.req	53
6.32	RemoteStopTransaction.conf	53
6.33	ReserveNow.req	54
6.34	ReserveNow.conf	54
6.35	Reset.req.....	54
6.36	Reset.conf.....	55
6.37	SendLocalList.req.....	55
6.38	SendLocalList.conf	56
6.39	StartTransaction.req.....	56
6.40	StartTransaction.conf	57
6.41	StatusNotification.req	57
6.42	StatusNotification.conf.....	58
6.43	StopTransaction.req	58
6.44	StopTransaction.conf.....	59
6.45	UnlockConnector.req	60
6.46	UnlockConnector.conf.....	60
6.47	UpdateFirmware.req.....	60
6.48	UpdateFirmware.conf	61
7	Types.....	62
7.1	AuthorisationData	62
7.2	AuthorizationStatus.....	62

7.3	AvailabilityStatus	62
7.4	AvailabilityType	63
7.5	CancelReservationStatus.....	63
7.6	ChargePointErrorCode	64
7.7	ChargePointStatus	64
7.8	ClearCacheStatus.....	66
7.9	ConfigurationStatus	66
7.10	DataTransferStatus	66
7.11	DiagnosticsStatus	67
7.12	FirmwareStatus	67
7.13	IccidString	68
7.14	IdTagInfo.....	68
7.15	IdToken	68
7.16	ImsiString	69
7.17	KeyValue	69
7.18	Location.....	69
7.19	Measurand	70
7.20	MeterValue.....	71
7.21	ReadingContext	72
7.22	NameString.....	73
7.23	RegistrationStatus	73
7.24	RemoteStartStopStatus	73
7.25	ReservationStatus.....	74
7.26	ResetStatus	74
7.27	ResetType.....	74
7.28	SerialNumberString.....	75
7.29	TransactionData	75
7.30	UnitOfMeasure.....	75
7.31	UnlockStatus	76
7.32	UpdateStatus	76
7.33	UpdateType.....	77
7.34	ValueFormat.....	77

7.35	VersionString	77
8	Binding to Transport Protocol	78
8.1	Charge Box Identity	78
8.2	Fault Response	78
8.3	Mobile Networks	79
8.4	Download Firmware.....	80
8.5	Upload Diagnostics.....	81
8.6	Compression	81
8.7	Security	81
8.8	WSDL.....	81

1 Scope

This document defines the protocol used between a **Charge Point** and **Central System**. If the protocol requires a certain action or response from one side or the other, then this will be stated in this document.

The specification does not define the communication technology. Any technology will do, as long as it supports TCP/IP connectivity.

2 Terminology and Conventions

2.1 Conventions

The key words “MUST”, “MUST NOT”, “REQUIRED”, “SHALL”, “SHALL NOT”, “SHOULD”, “SHOULD NOT”, “RECOMMENDED”, “MAY”, and “OPTIONAL” in this document are to be interpreted as described in [RFC2119].

All sections and appendixes, except “Scope” and “Terminology and Conventions”, are normative, unless they are explicitly indicated to be informative.

2.2 Definitions

This section contains the terminology that is used throughout this document.

Central System	Charge Point Management System: the central system that manages charge points and has the information for authorizing users for using its charge points.
Charge Point	The Charge Point is the physical system where an electric vehicle can be charged. A Charge Point will have one or more connectors.
Charge Box	A Charge Box is the control unit within a Charge Point. Charge Box and Charge Point are often used interchangeably in this document.
Connector	The term “Connector”, as used in this specification, refers to an independently operated and managed electrical outlet on a Charge Point. This usually corresponds to a single physical connector, but in some cases a single outlet may have multiple physical socket types and/or tethered cable/connector arrangements to facilitate different vehicle types (e.g. four-wheeled EVs and electric scooters).

2.3 Abbreviations

EV	Electrical Vehicle
FTP(S)	File Transport Protocol (Secure)
HTTP(S)	HyperText Transport Protocol (Secure)
ICCID	Integrated Circuit Card Identifier
IMSI	International Mobile Subscription Identify
PDU	Protocol Data Unit
SOAP	Simple Object Access Protocol
SSL	Secure Socket Layer
TLS	Transport Layer Security
URL	Uniform Resource Locator
WSDL	Web Service Definition Language

2.4 References

- [RFC2119]** "Key words for use in RFCs to Indicate Requirement Levels". S. Bradner. March 1997. <http://www.ietf.org/rfc/rfc2119.txt>
- [SOAP]** "SOAP Version 1.2 Part 0: Primer (Second Edition)". 27 April 2007. <http://www.w3.org/TR/2007/REC-soap12-part0-20070427/>
- [WS-ADDR]** "Web Services Addressing 1.0", <http://www.w3.org/2005/08/addressing>
- [SOAP-SCEN]** "SOAP Version 1.2 Usage Scenarios", <http://www.w3.org/TR/xmlp-scenarios/#S23>

3 Introduction

This is the specification for OCPP version 1.5. Significant changes with respect to version 1.2 have been marked with change bars.

This document describes a standard open protocol for communication between charge points and a central system. The control unit inside a charge point is referred to as a Charge Box; the central system as Central System.

Some basic concepts are explained in the sections below in this introductory chapter. Chapter 4 and 5 describe the operations supported by the protocol. The exact messages and their parameters are detailed in chapter 6 and data types are described in chapter 7.

The protocol is designed to be implemented with SOAP over HTTP. See chapter 8 for more details.

3.1 General views of operation

This section is informative.

The following figures describe the general views of the operations between Charge Box and Central System for two cases:

- 1) a Charge Box requesting authentication of a card and sending charge transaction status,
- 2) Central System requesting a Charge Box to update its firmware.

The arrow labels in the following figures indicate the PDUs exchanged during the invocations of the operations. These PDUs are defined in detail in chapter 6.

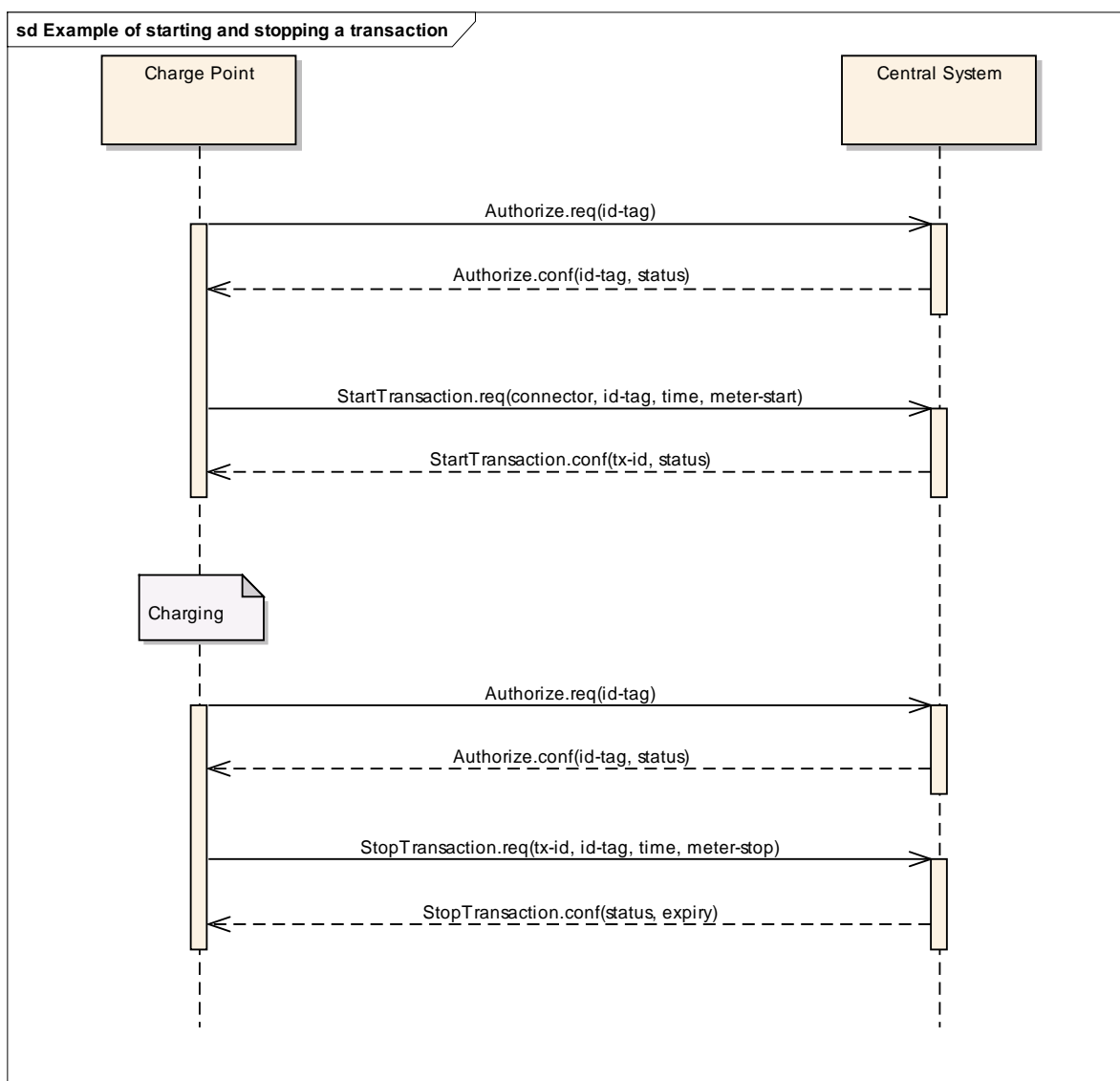


Figure: Example of starting and stopping a transaction

When a Charge Box needs to charge an electric vehicle, it needs to authenticate the user first before the charging can be started. If the user is authorized the Charge Box informs the Central System that it has started with charging.

When charging is done and a user wishes to unplug the electric vehicle from the charge point, the Charge Box needs to verify that the user is either the one that initiated the charging or that the user is in the same group and thus allowed to terminate the charging. Once authorized, the Charge Box informs the Central System that the charging has been stopped.

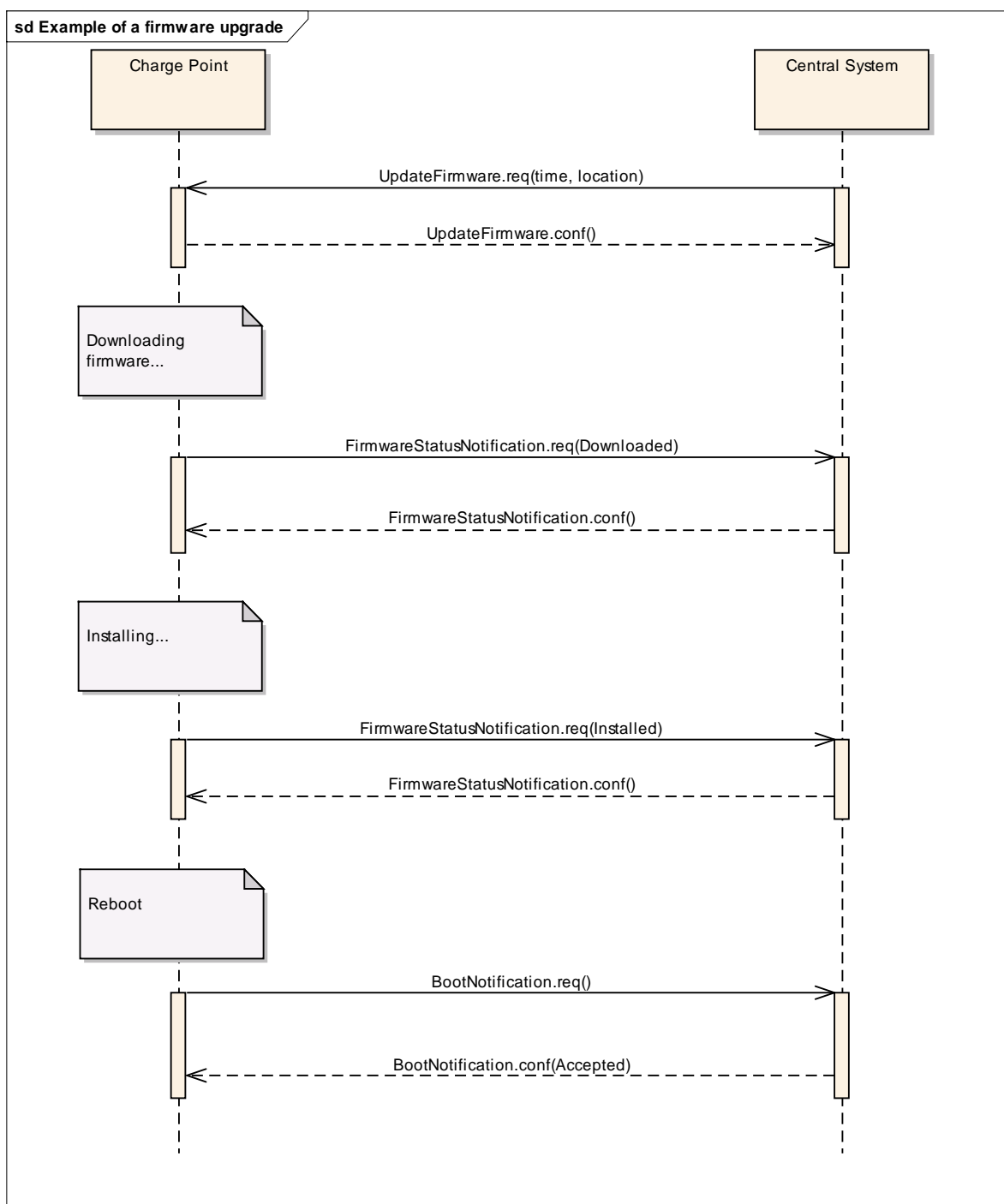


Figure: Example of a firmware upgrade

When a Charge Box needs to be updated with new firmware, then the Central System informs at which time the Charge Box can start downloading the new firmware. Once the Charge Box has downloaded and installed the firmware, it will notify the Central System of the status for each step. Most likely the Charge Box

needs to reboot, if so in that case, the Charge Box will send a boot notification containing the new information about the installed firmware.

3.2 Off-line behaviour

This section is normative.

Data communication between Charge Box and Central System will in most cases be done by means of wireless communication (e.g. GPRS, UMTS). In the event of unavailability of the communications or even of the Central System, the Charge Box is designed to operate stand-alone. It MAY authorise identifiers using its local authorisation list. Charge Box SHALL queue start and stop requests that need to be sent to the Central System and transmit these requests in order as soon as the connection to the Central System is restored. In such cases the Central System will not be aware that these are queued requests (other than by inference given that the various timestamps are significantly in the past) – it will process these as any other requests.

This off-line behaviour of Charge Box is the reason that Central System SHALL always accept a 'start transaction' request. It cannot refuse it, because the transaction may already have taken place off-line.

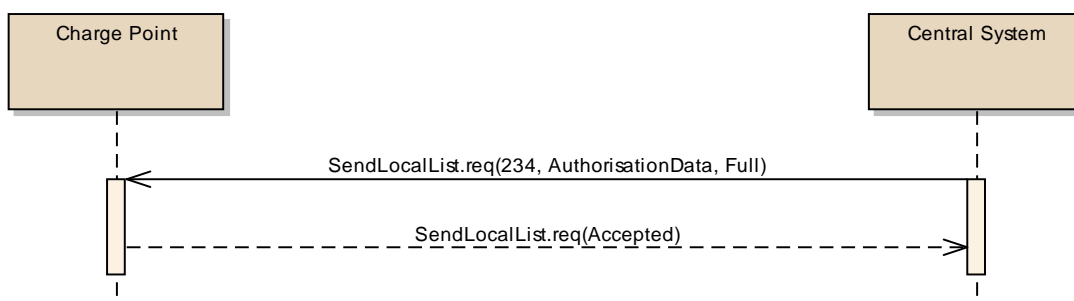
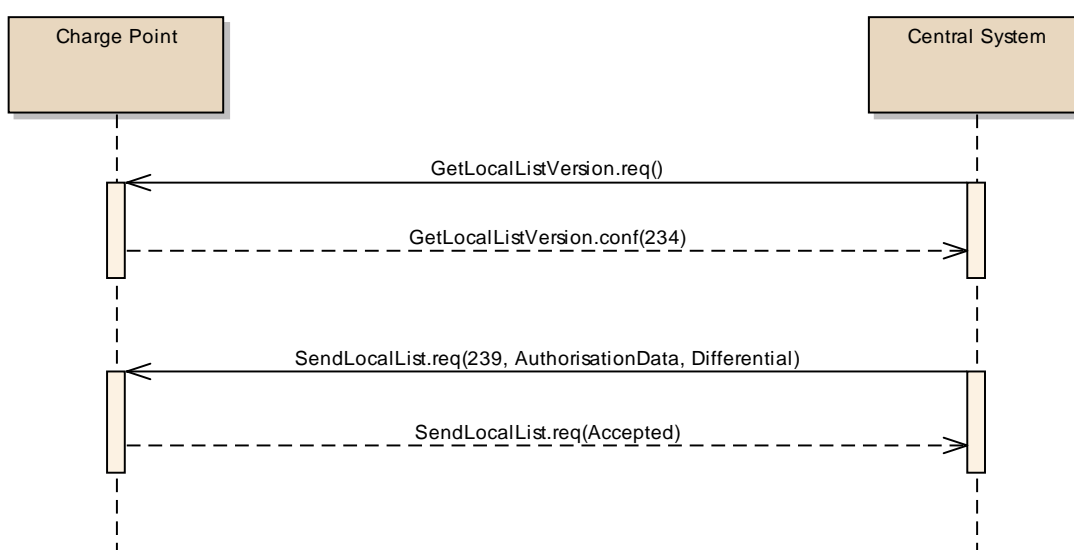
3.3 Local authorisation list

This section is informative.

The local white list of OCPP version 1.2 that serves to cache previously authorized id-tags has been extended to support the concept of a local authorisation list that can be synchronized with the Central System. The local authorisation list is still updated with the results of authorisation, start and stop requests, but in addition to that it can be synchronised with the Central System to contain the authorisation status of all tag-ids or a selection of tag-ids. If synchronisation is not used, the local authorisation list will exhibit the same behaviour as the former local white list.

In order to support the above-mentioned off-line behaviour the Charge Box may implement a local authorisation list that can cache authorized id-tags and can be synchronised with the Central System. In response to an authorisation, start or stop transaction request Central System will return parent-id, expiry-date and an authorisation status that Charge Box uses to update its local authorisation list. This is the caching mechanism.

Additionally, the Central System can synchronise this list by either (1) sending a complete list of id-tags to replace the local authorisation list or (2) by sending a list of changes (add, update, delete) to apply to the local authorisation list. The new operations to support this are [Get Local List Version](#) and [Send Local List](#).

sd Example of a full update**sd Example of a differential update**

3.4 Parent id-tag

This section is informative.

Central System has the ability to group id-tags, thus allowing one id-tag in a group to start a transaction and another id-tag in the same group to stop the transaction. Id-tags are grouped by appointing one id-tag in the group to be the parent. The value of parent-id-tag of every id-tag (including the parent) in the group is set to the value of this 'parent' id-tag. Two id-tags are considered to be in the same group when their parent-id-tags match.

3.5 Reservations

This section is informative.

Reservation of a charge point is possible using the Reserve Now operation. This operation reserves the charge point until a certain expiry time for a specific id-tag. A parent id-tag may be included in the reservation to support 'group' reservations. It is possible to reserve a specific connector on a charge point or to reserve any connector on a charge point. A reservation is released when the reserved id-tag is used on the reserved connector (when specified) or on any connector (when unspecified) or when the expiry time is reached or when the reservation is explicitly cancelled.

3.6 Vendor-specific data transfer

This section is informative.

The mechanism of vendor-specific data transfer allows for the exchange of data or messages not standardized in OCPP . As such, it offers a framework within OCPP for experimental functionality that may find its way into future OCPP versions. Experimenting can be done without creating new (possibly incompatible) OCPP dialects. Secondly, it offers a possibility to implement additional functionality agreed upon between specific Central System and Charge Box vendors.

The operation Vendor Specific Data can be initiated either by the Central System or by the Charge Box.

IMPORTANT: Use this with extreme caution and only for optional functionality, because it will impact your compatibility with other systems that do not make use of this option. We recommend mentioning the usage explicitly in your documentation and/or communication. Please consider submitting a change request before turning to this option to add functionality.

3.7 Time zones

This section is informative.

OCPP does not prescribe the use of a specific time zone for time values. However, it is strongly recommended to use UTC for all time values to improve interoperability between Central Systems and Charge Boxes.

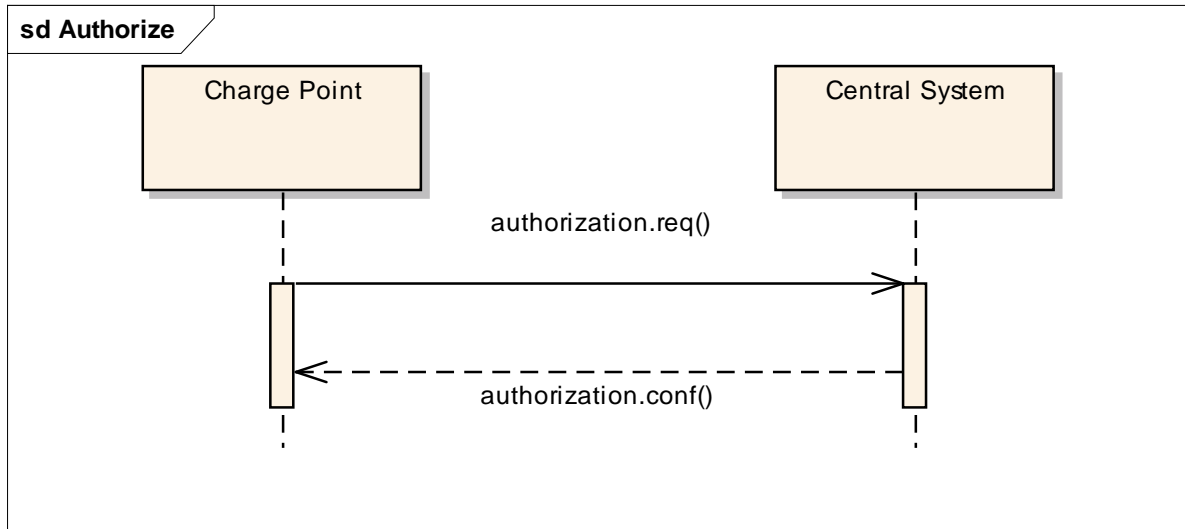
3.8 Case sensitivity

This section is normative.

All strings in messages and enumerations are case sensitive, unless explicitly stated otherwise. String elements that are case insensitive will be of type 'CiString'.

4 Operations Initiated by Charge Point

4.1 Authorize

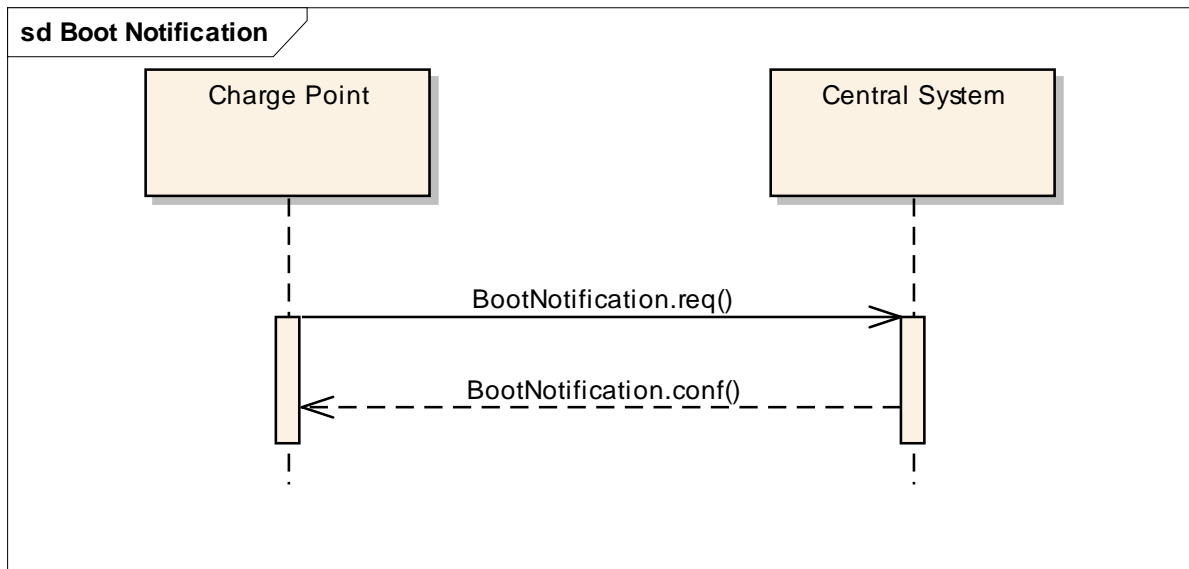


Before the owner of an electric vehicle can start or stop charging, the Charge Box needs to be able to authorize the operation. Only after authorisation will Charge Box unlock the connector. Note: Stopping a charge transaction needs only to be authorized when the user stopping the transaction is different than the user that started the transaction.

A Charge Box MAY cache previously authorized identifiers in the local authorisation list and MAY use these to authorize a user. If the identifier is not present in the local authorisation list, then the Charge Box SHALL send a [Authorize.req](#) PDU to the Central System for requesting authorisation. If the identifier is present in the local authorisation list, then Charge Box MAY omit the sending of an authorisation request to the Central System and use the authorisation value of the local authorisation list instead.

Upon receipt of an Authorize.req PDU, the Central System SHALL respond with an [Authorize.conf](#) PDU. This response PDU SHALL indicate, whether or not the id-tag is accepted by the Central System. If the Central System accepts the id-tag then the response PDU MAY include a parent-id-tag and MUST include an authorisation status value indicating acceptance or a reason for rejection.

4.2 Boot Notification



After start-up a Charge Box sends a notification to the Central System with information about its configuration (e.g. version, vendor, etc.). The Central System will only accept Charge Boxes that are registered with the Central System.

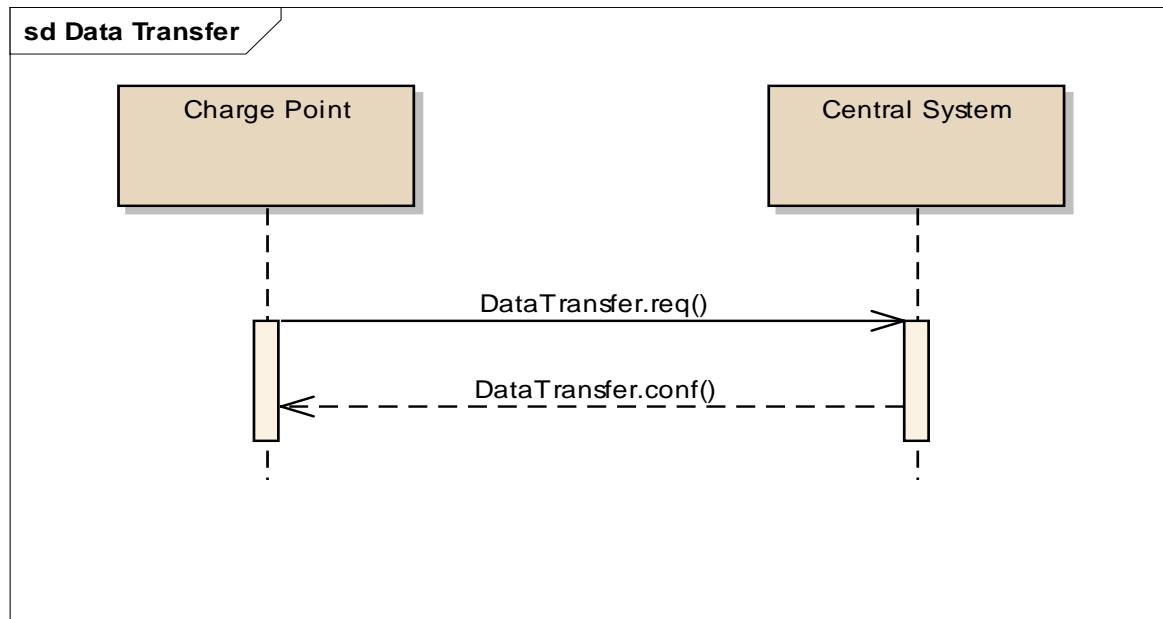
The Charge Box SHALL send a [BootNotification.req](#) PDU each time it (re-)boots.

Upon receipt of a [BootNotification.req](#) PDU, the Central System SHALL respond with a [BootNotification.conf](#). The response PDU SHALL indicate whether the Central System accepts the Charge Box. When the Central System is willing to accept the Charge Box, then the response PDU SHALL contain the Central System's current time and heartbeat interval.

Upon receipt of a [BootNotification.conf](#) PDU, the Charge Box SHALL keep sending a [BootNotification.req](#) PDU when the Central System doesn't accept it. The Charge Box SHOULD use an acceptable interval for resending a [BootNotification.req](#) PDU, to avoid flooding the Central System.

The Charge Box SHALL NOT send any other request other than [BootNotification.req](#) until the Central System accepts the Charge Box.

4.3 Data Transfer



If a Charge Box needs to send information to the Central System for a function not supported by OCPP, it SHALL use the [DataTransfer.req](#) PDU.

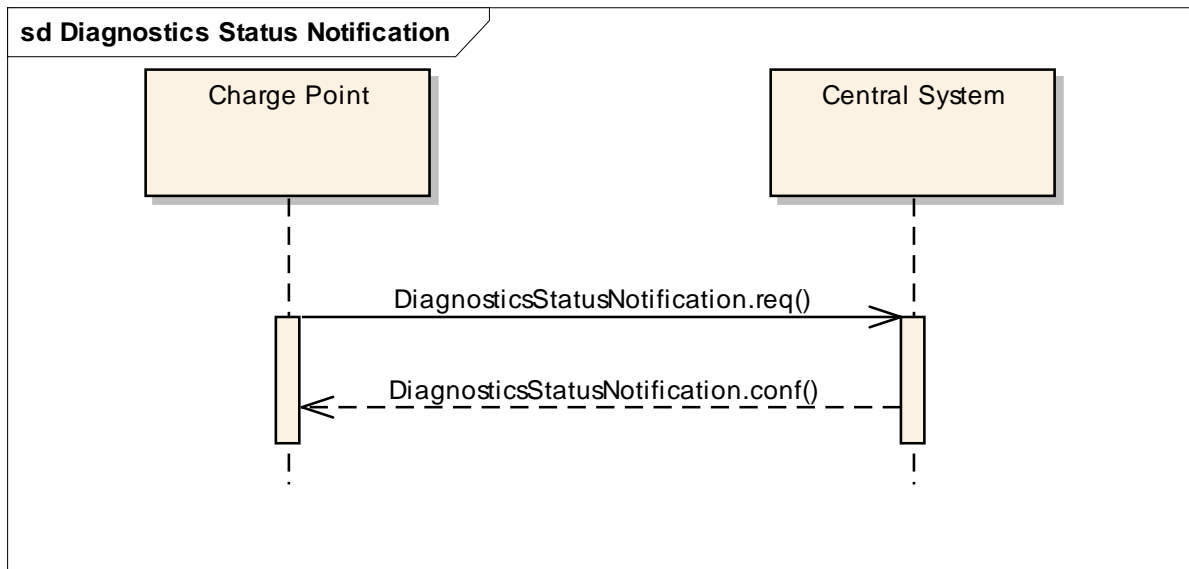
The `vendorId` in the request SHOULD be known to the Central System and uniquely identify the vendor-specific implementation. The `VendorId` SHOULD be a value from the reversed DNS namespace, where the top tiers of the name, when reversed, should correspond to the publicly registered primary DNS name of the Vendor organisation.

Optionally, the `messageId` in the request PDU MAY be used to indicate a specific message or implementation.

The length of data in both the request and response PDU is undefined and should be agreed upon by all parties involved.

If the recipient of the request has no implementation for the specific `vendorId` it SHALL return a status `'UnknownVendor'` and the data element SHALL not be present. In case of a `messageId` mismatch (if used) the recipient SHALL return status `'UnknownMessageId'`. In all other cases the usage of status `'Accepted'` or `'Rejected'` and the data element is part of the vendor-specific agreement between the parties involved.

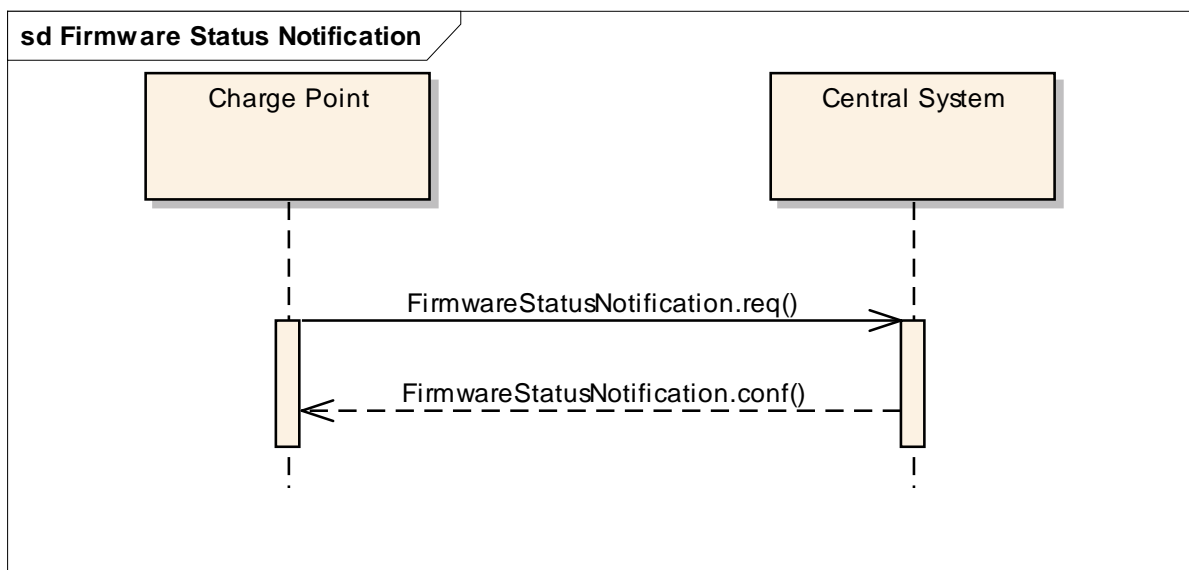
4.4 Diagnostics Status Notification



Charge Box sends a notification to inform the Central System when a diagnostics upload has finished. The Charge Box SHALL send a [DiagnosticsStatusNotification.req](#) PDU to inform the Central System that the upload of diagnostics has finished successfully or failed.

Upon receipt of a `DiagnosticsStatusNotification.req` PDU, the Central System SHALL respond with a [DiagnosticsStatusNotification.conf](#).

4.5 Firmware Status Notification

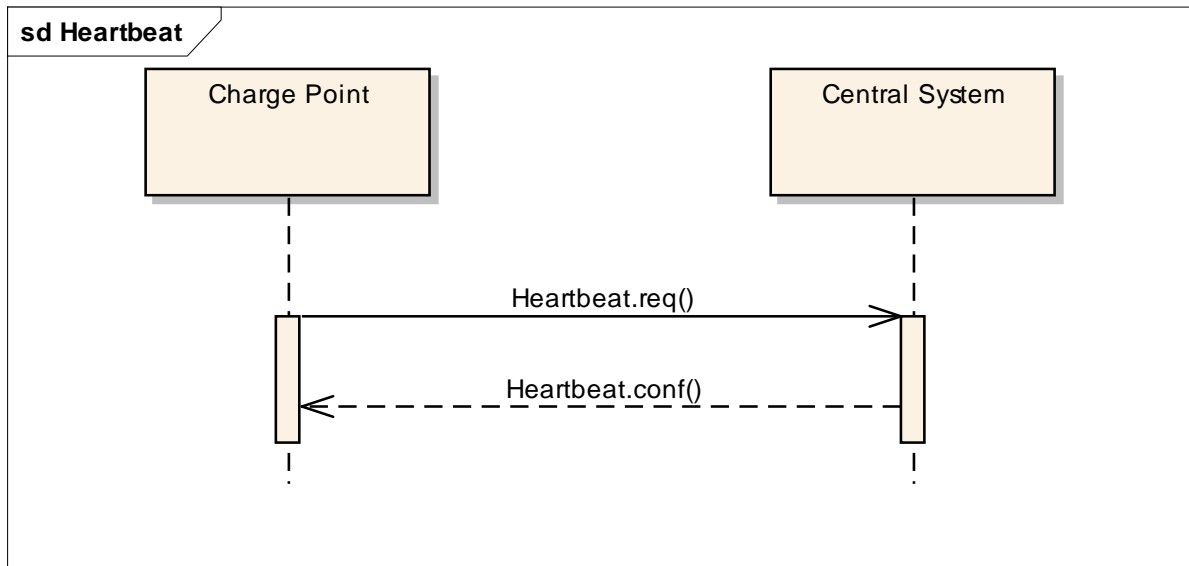


A Charge Box sends notifications to inform the Central System about the progress of the firmware update. The Charge Box SHALL send a

[FirmwareStatusNotification.req](#) PDU for informing the Central System about the progress of the installation of a firmware update.

Upon receipt of a [FirmwareStatusNotification.req](#) PDU, the Central System SHALL respond with a [FirmwareStatusNotification.conf](#).

4.6 Heartbeat



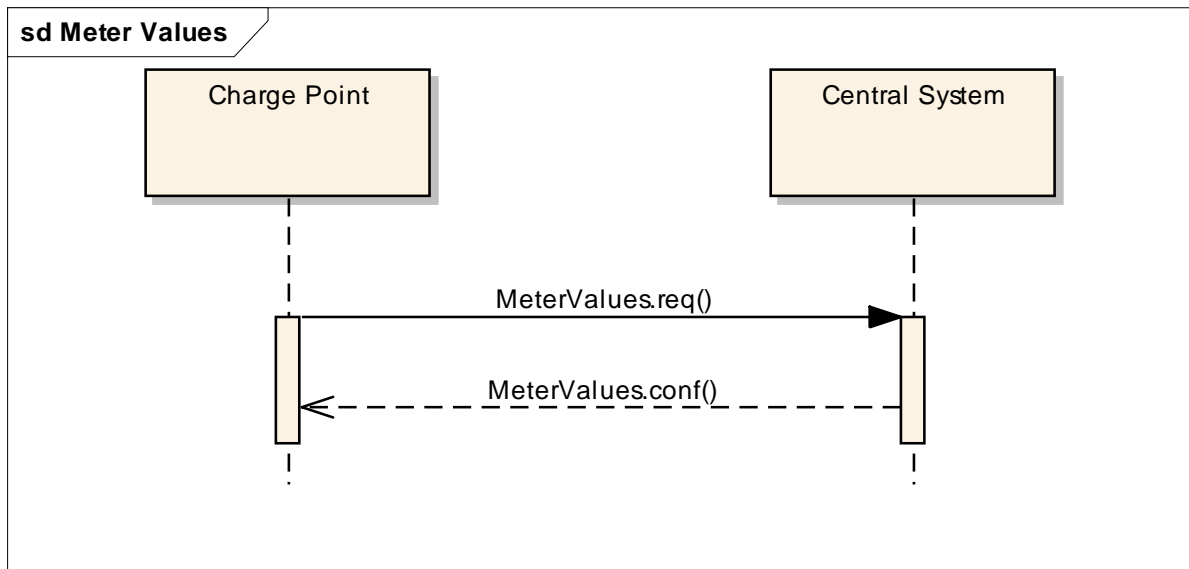
To let the Central System know that a Charge Point is still connected, a Charge Box sends a heartbeat after a configurable time interval.

The Charge Box SHALL send a [Heartbeat.req](#) PDU for ensuring that the Central System knows that a Charge Box is still alive.

Upon receipt of a `Heartbeat.req` PDU, the Central System SHALL respond with a [Heartbeat.conf](#). The response PDU SHALL contain the current time of the Central System, which could be used by the Charge Box to synchronize its internal clock.

The Charge Box MAY skip sending a `Heartbeat.req` PDU when another PDU has been sent to the Central System within the configured heartbeat interval. This implies that a Central System SHOULD assume availability of a Charge Box whenever a PDU has been received, the same way as it would have, when it received a `Heartbeat.req` PDU.

4.7 Meter Values



A Charge Box MAY sample the electricity meter or other sensor/transducer hardware to provide extra information about its meter values. It is up to the Charge Box to decide when it will send meter values. This can be configured using the [ChangeConfiguration.req](#) message to data acquisition intervals and specify data to be acquired & reported.

The Charge Box SHALL send a [MeterValues.req](#) PDU for offloading meter values. The request PDU SHALL contain for each sample:

1. The id of the Connector from which samples were taken. A value of zero is used when samples are not associated with a specific Connector.
2. The transaction id of the transaction to which these values are related, if applicable. If there is no transaction in progress or if the values are taken from the main meter, then transaction id may be omitted.
3. One or more **values** elements, of type [MeterValue](#) (see below), each representing a set of one or more data values taken at a particular point in time.

Each **values** element contains a timestamp and a set of one or more individual **value** elements, all captured at the same point in time. Each **value** element contains a single value datum. The nature of each **value** is determined by the optional **measurand**, **context**, **location**, **unit**, and **format** attributes.

The optional **measurand** attribute specifies the type of value being measured/reported.

The optional **context** attribute specifies the reason/event triggering the reading.

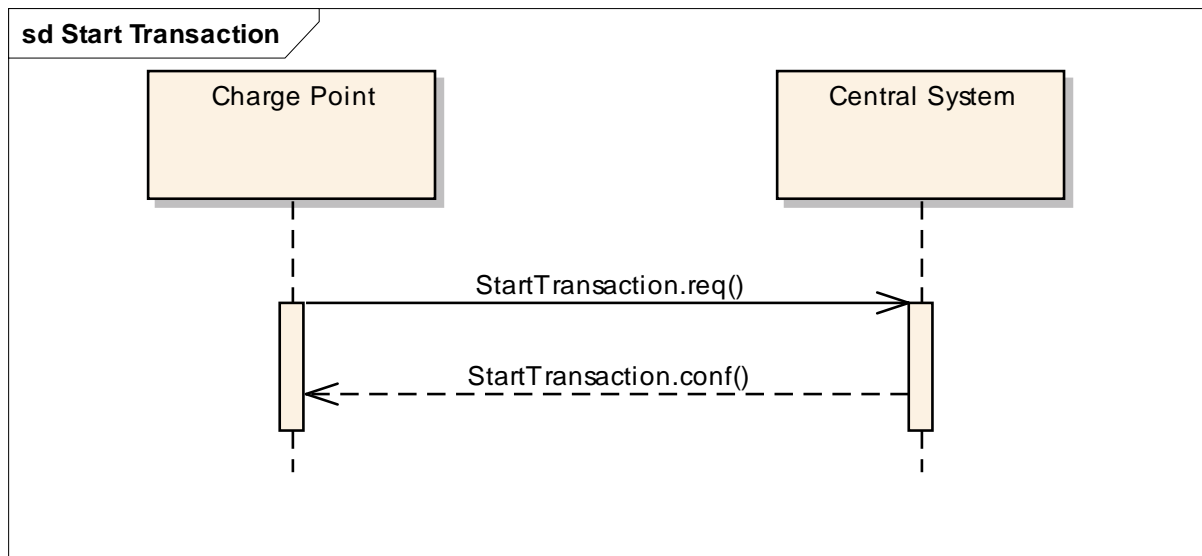
The optional **location** attribute specifies where the measurement is taken (e.g. Inlet, Outlet).

The **EXPERIMENTAL** optional **format** attribute specifies whether the data is represented in the normal (default) form as a simple numeric value ("**Raw**"), or as "**SignedData**", an opaque digitally signed binary data block, represented as hex data. This experimental attribute may be deprecated and subsequently removed in later versions, when a more mature solution alternative is provided.

To retain backward compatibility, the default values of all of the optional attributes on a **value** element are such that a **value** without any attributes will be interpreted, as heretofore, as a register reading of active import energy in Wh (Watt-hour) units.

Upon receipt of a MeterValues.req PDU, the Central System SHALL respond with a [MeterValues.conf](#).

4.8 Start Transaction



When an electric vehicle is allowed to start charging, the Charge Box needs to inform the Central System about this.

The Charge Box SHALL send a [StartTransaction.req](#) PDU to the Central System to inform it about the start of a charging transaction. If this transaction ends a reservation (see [Reserve Now](#) operation), then the `StartTransaction.req` MUST contain the `reservationId`.

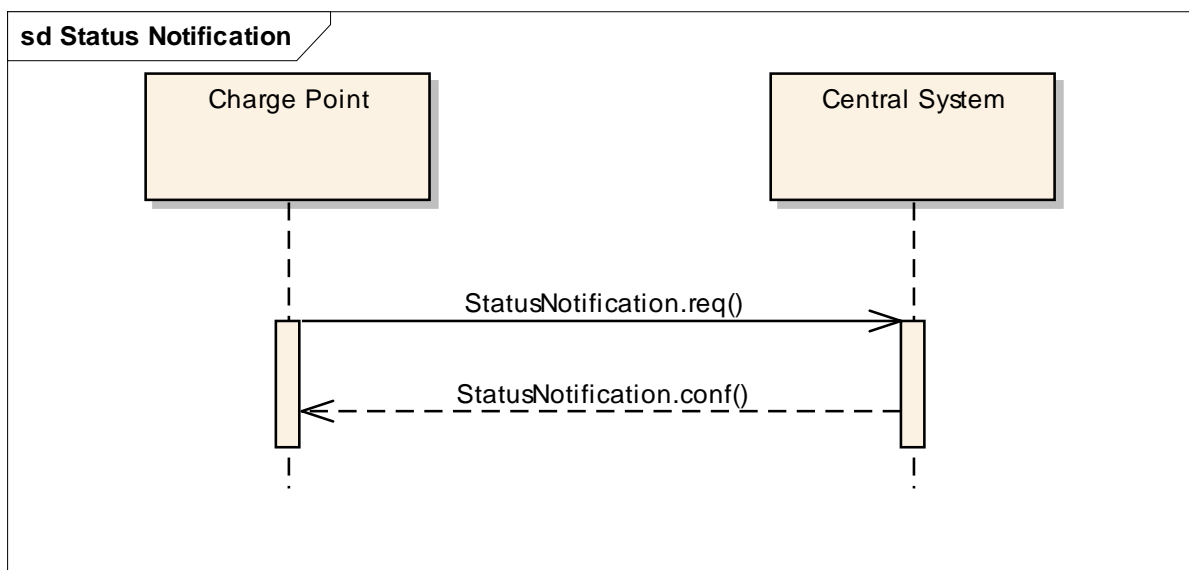
The Central System MUST verify validity of the transaction, because the identifier might have been authorized locally by the Charge Box using an out-of-date white

list. The identifier, for instance, may have been blocked since it was added to the local white list.

Upon receipt of a `StartTransaction.req` PDU, the Central System SHALL respond with a [StartTransaction.conf](#) PDU. This response PDU MUST include a transaction id and an authorisation status value.

If Charge Box has implemented a local authorisation list, then upon receipt of a `StartTransaction.conf` PDU the Charge Box SHALL update the local list entry with the `IdTagInfo` value from the response. An authorisation status value of 'ConcurrentTx' SHALL be replaced by 'Accepted' in the local authorisation list.

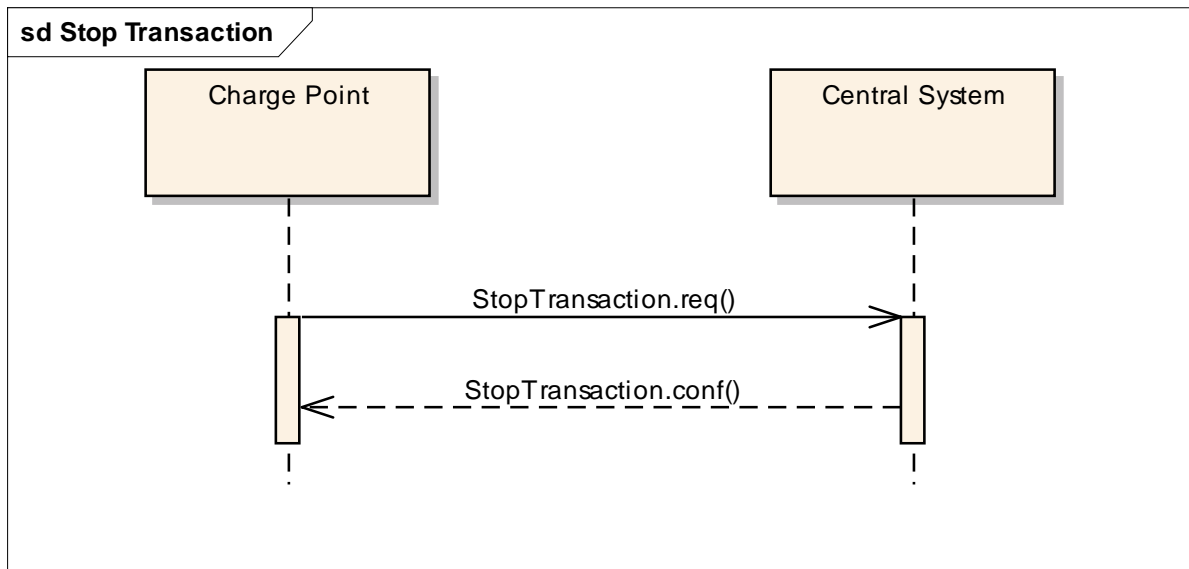
4.9 Status Notification



A Charge Box sends a notification to the Central System to inform the Central System about a status or error condition within the Charge Box. The Charge Box SHALL send an [StatusNotification.req](#) PDU when it becomes unavailable as result of an error condition or a scheduled [Change Availability](#) command. The Charge Box MAY send an `StatusNotification.req` PDU to inform the Central System of other error conditions.

Upon receipt of an `StatusNotification.req` PDU, the Central System SHALL respond with an [StatusNotification.conf](#).

4.10 Stop Transaction



When an electric vehicle is allowed to stop charging; the Charge Box needs to be able to inform the Central System about this. The Charge Box SHALL send a [StopTransaction.req](#) PDU when a transaction needs to be stopped. A transaction MUST be stopped explicitly by the Charge Box.

Upon receipt of a StopTransaction.req PDU, the Central System SHALL respond with a [StopTransaction.conf](#) PDU. The Central System SHALL always stop the transaction.

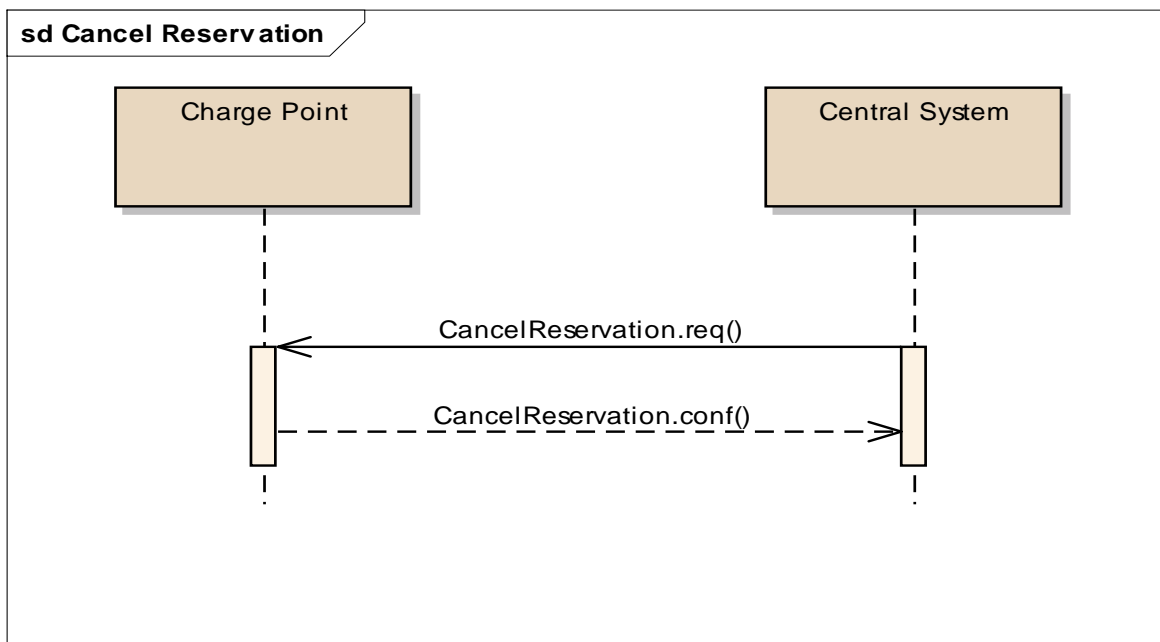
A StopTransaction.req PDU MAY contain an optional **TransactionData** element to provide more detail about transaction usage. The optional TransactionData element is a container for any number of **values** (MeterValue datatype) sub-elements, using the same data structure as the **values** elements of the MeterValues.req PDU (See **Fout! Verwijzingsbron niet gevonden.**)

If Charge Box has implemented a local authorisation list, then upon receipt of a StopTransaction.conf PDU the Charge Box SHALL update the local list entry with the IdTagInfo value from the response. An authorisation status value of 'ConcurrentTx' SHALL be replaced by 'Accepted' in the local authorisation list.

The id-tag in the request PDU MAY be omitted when the Charge Box itself needs to stop the transaction. For instance, when the Charge Box is requested to reset.

5 Operations Initiated by Central System

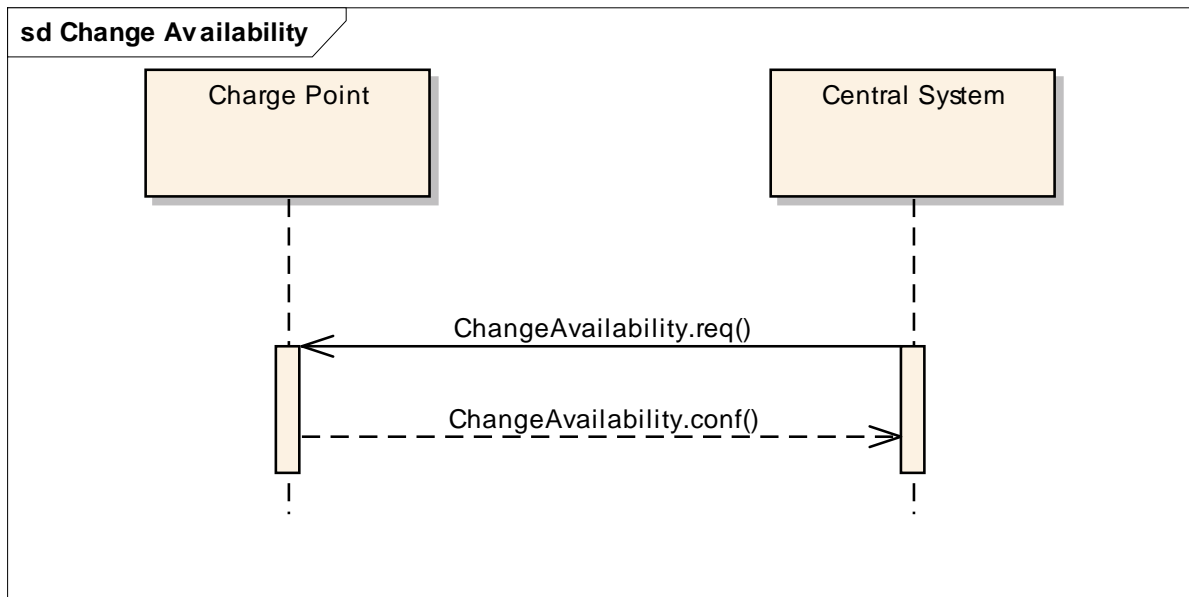
5.1 Cancel Reservation



To cancel a reservation the Central System SHALL send an [CancelReservation.req](#) PDU to the Charge Box.

If the Charge Box has a reservation matching the reservationId in the request PDU, it SHALL return status 'Accepted'. Otherwise it SHALL return 'Rejected'.

5.2 Change Availability

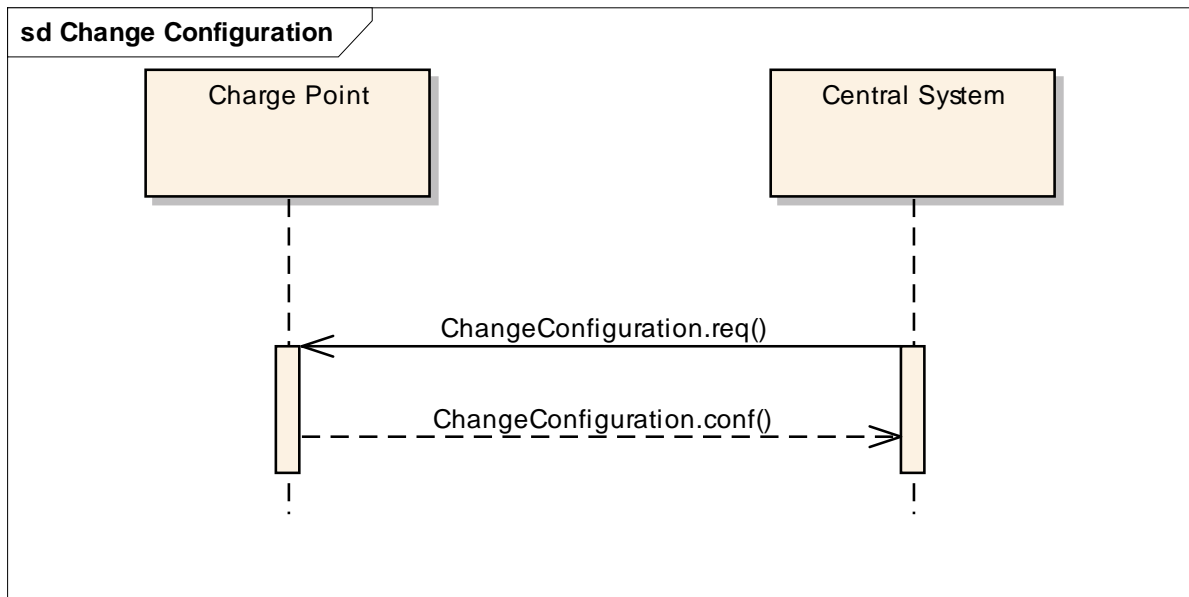


Central System can request a Charge Box to change its availability. A Charge Box is considered available ("operative") when it is charging or ready for charging. A Charge Box is considered unavailable when it does not allow any charging. The Central System SHALL send a [ChangeAvailability.req](#) PDU for requesting a Charge Box to change its availability. The Central System can change the availability to available or unavailable.

Upon receipt of a ChangeAvailability.req PDU, the Charge Box SHALL respond with a [ChangeAvailability.conf](#) PDU. The response PDU SHALL indicate whether the Charge Box is able to change to the requested availability or not. When a transaction is in progress Charge Box SHALL respond with availability status 'Scheduled' to indicate that it is scheduled to occur after the transaction has finished. When that happens Charge Box SHALL inform Central System of its new availability status with a [Status Notification](#).

In the event that Central System requests Charge Box to change to a status it is already in, Charge Box SHALL respond with availability status 'Accepted'.

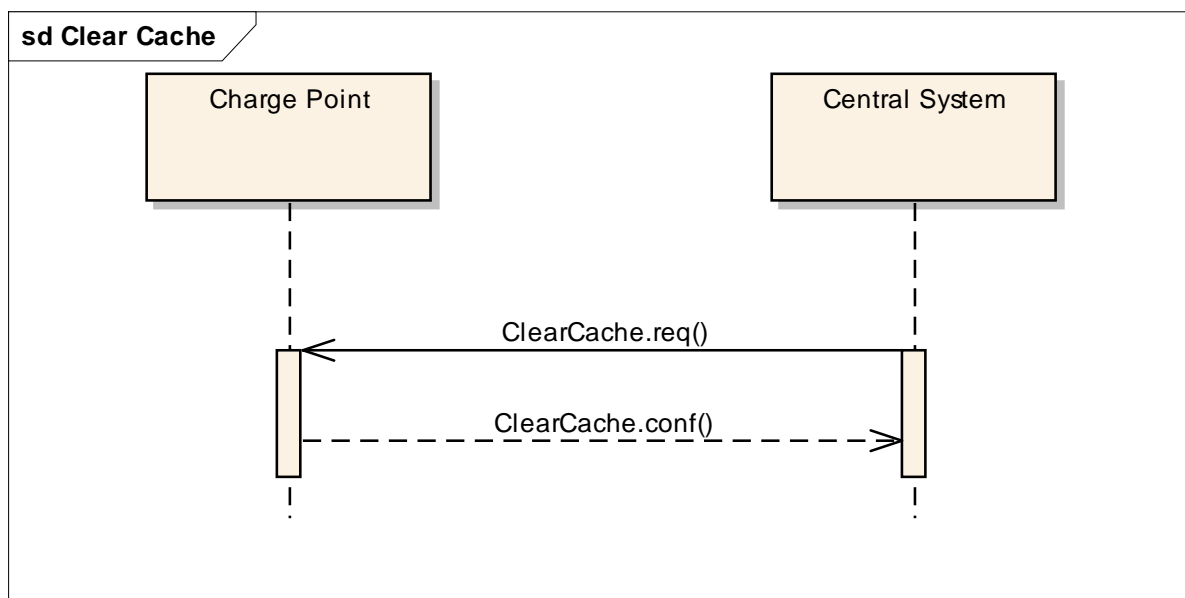
5.3 Change Configuration



Central System can request a Charge Box to change configuration parameters. To achieve this, Central System SHALL send a [ChangeConfiguration.req](#). This request contains a key-value pair, where "key" is the name of the configuration setting to change and "value" contains the new setting for the configuration setting.

Upon receipt of a [ChangeConfiguration.req](#) Charge Box SHALL reply with a [ChangeConfiguration.conf](#) indicating whether it was able to executed the change. Content of "key" and "value" is not prescribed. If "key" does not correspond to a configuration setting supported by Charge Box, it SHALL reply with a status NotSupported. Otherwise it SHALL indicate success or failure with status Accepted or Rejected respectively.

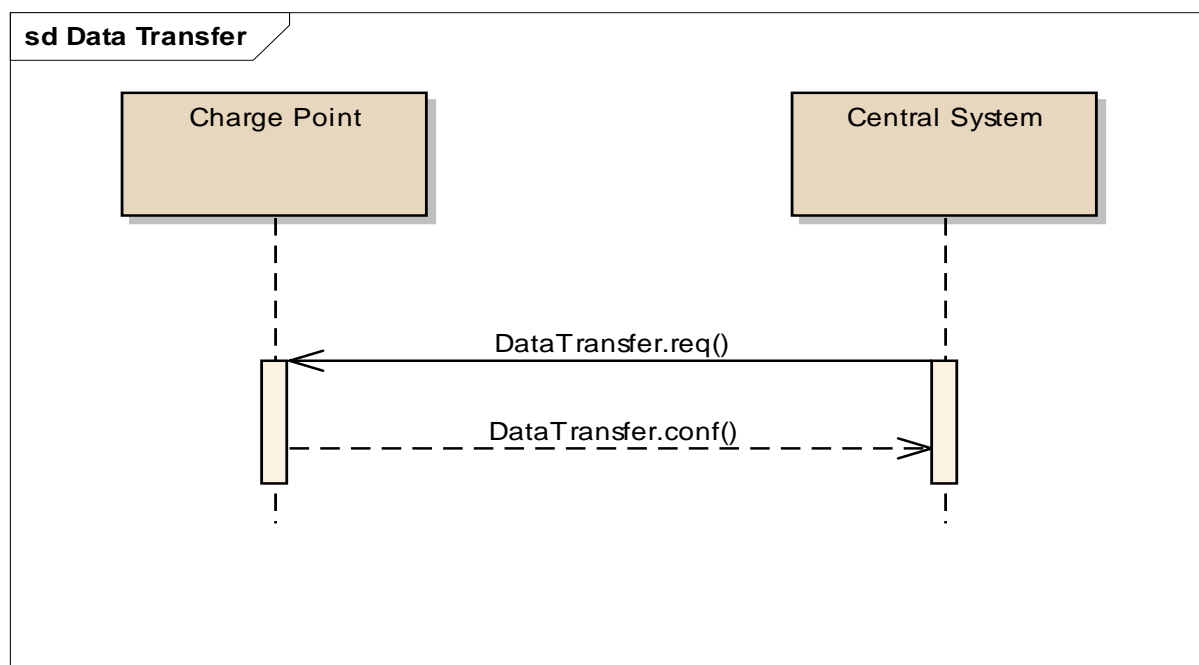
5.4 Clear Cache



Central System can request a Charge Box to clear its cache. For instance a Charge Box may cache previously authorized cards in a white list. The Central System SHALL send a [ClearCache.req](#) PDU for clearing the Charge Box's cache.

Upon receipt of a ClearCache.req PDU, the Charge Box SHALL respond with a [ClearCache.conf](#) PDU. The response PDU SHALL indicate whether the Charge Box was able to clear its cache.

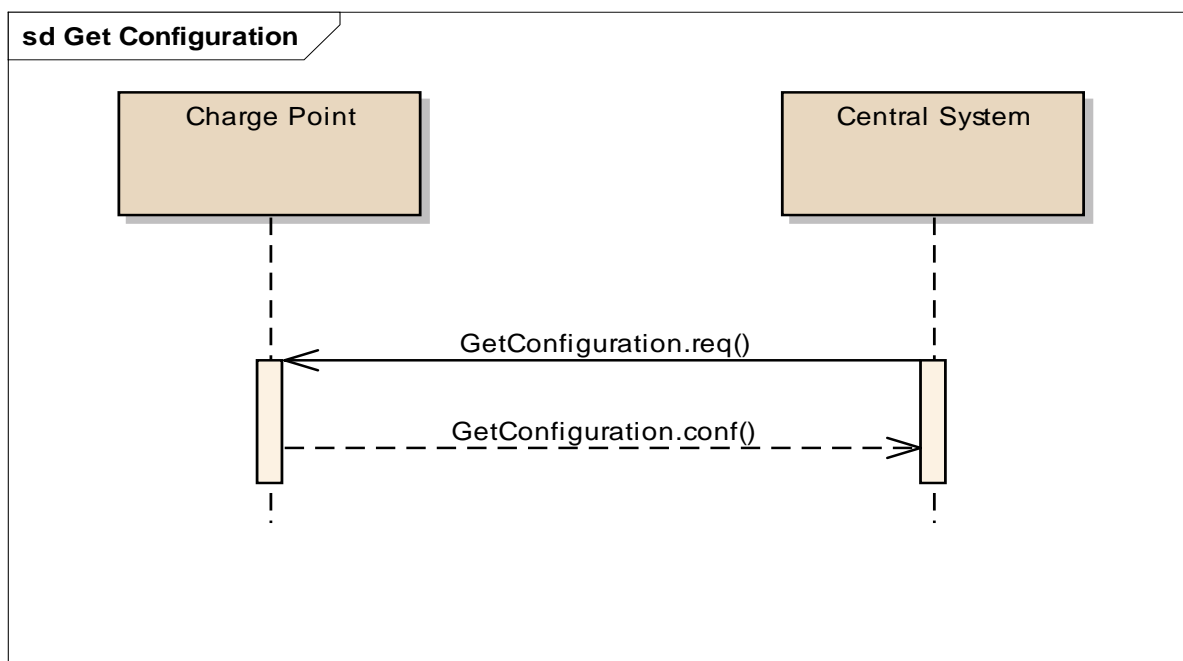
5.5 Data Transfer



If the Central System needs to send information to a Charge Box for a function not supported by OCPP, it SHALL use the [DataTransfer.req](#) PDU.

Behaviour of this operation is identical to the Data Transfer operation initiated by the Charge Box. See 4.3 Data Transfer for details.

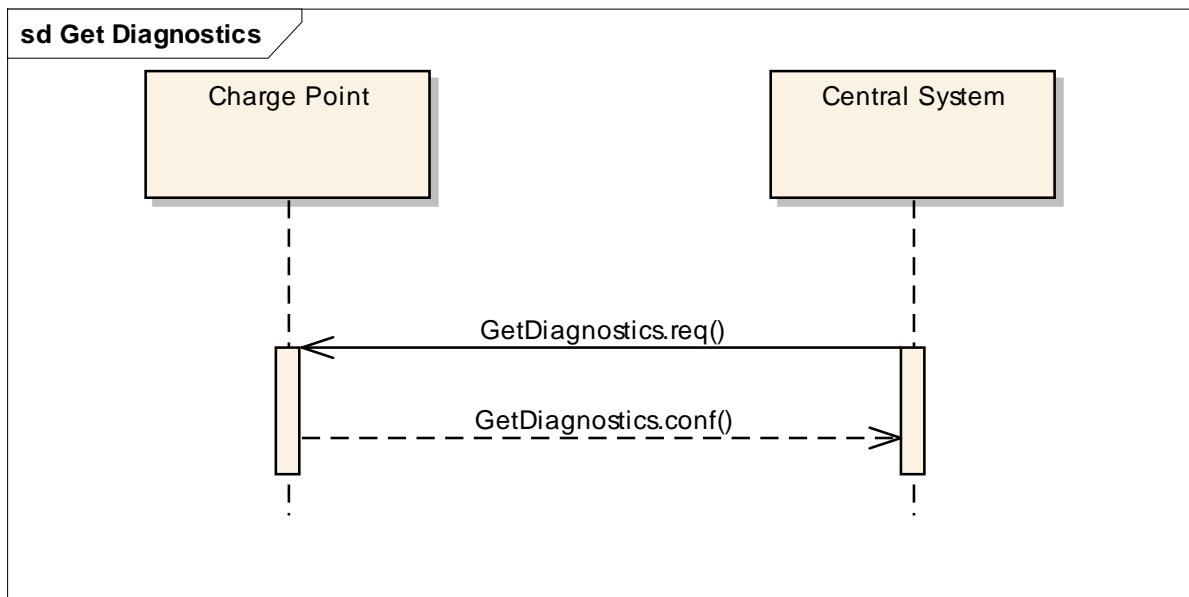
5.6 Get Configuration



To retrieve the value of configuration settings, the Central System SHALL send a [GetConfiguration.req](#) PDU to the Charge Box.

If the list of keys in the request PDU is empty or missing (it is optional), the Charge Box SHALL return a list of all configuration settings in [GetConfiguration.conf](#). Otherwise Charge Box SHALL return a list of recognized keys and their corresponding values and read-only state. Unrecognized keys will be placed in the response PDU as part of the optional unknown key list element of [GetConfiguration.conf](#).

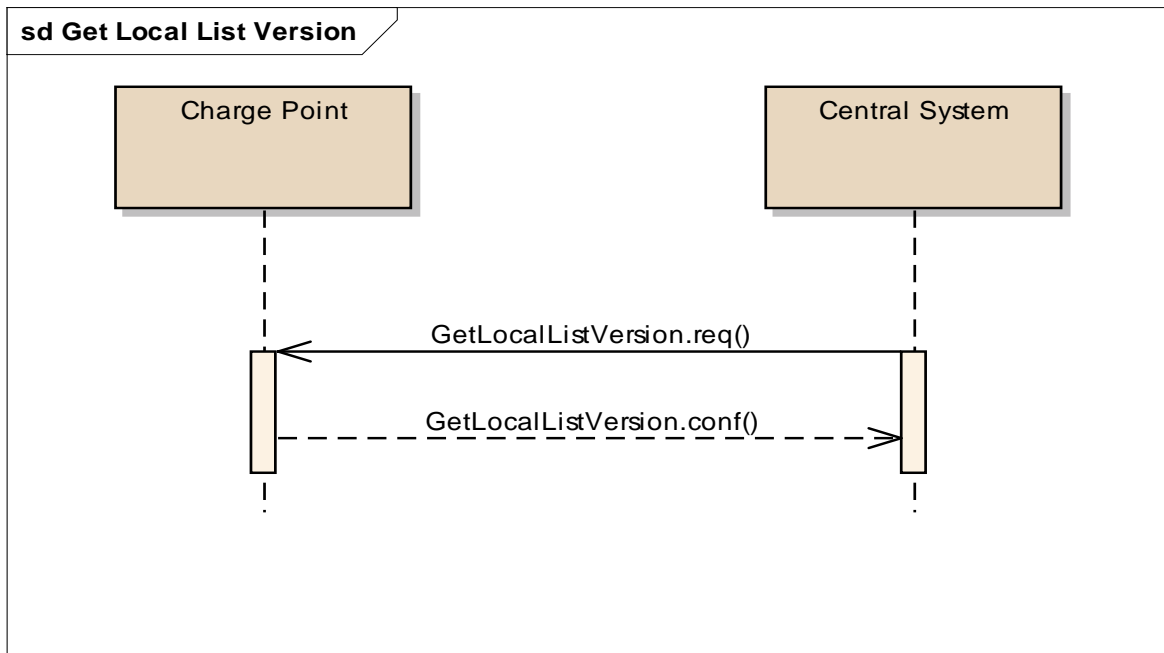
5.7 Get Diagnostics



Central System can request a Charge Box for diagnostic information. The Central System SHALL send a [GetDiagnostics.req](#) PDU for getting diagnostic information of a Charge Box with a location where the Charge Box MUST upload its diagnostic data to and optionally a begin and end time for the requested diagnostic information.

Upon receipt of a [GetDiagnostics.req](#) PDU, and if diagnostics information is available then Charge Box SHALL respond with a [GetDiagnostics.conf](#) PDU stating the name of the file containing the diagnostic information that will be uploaded. Charge Box SHALL upload a single compressed file. Format of the diagnostics file is not prescribed. If no diagnostics file is available, then [GetDiagnostics.conf](#) SHALL not contain a file name.

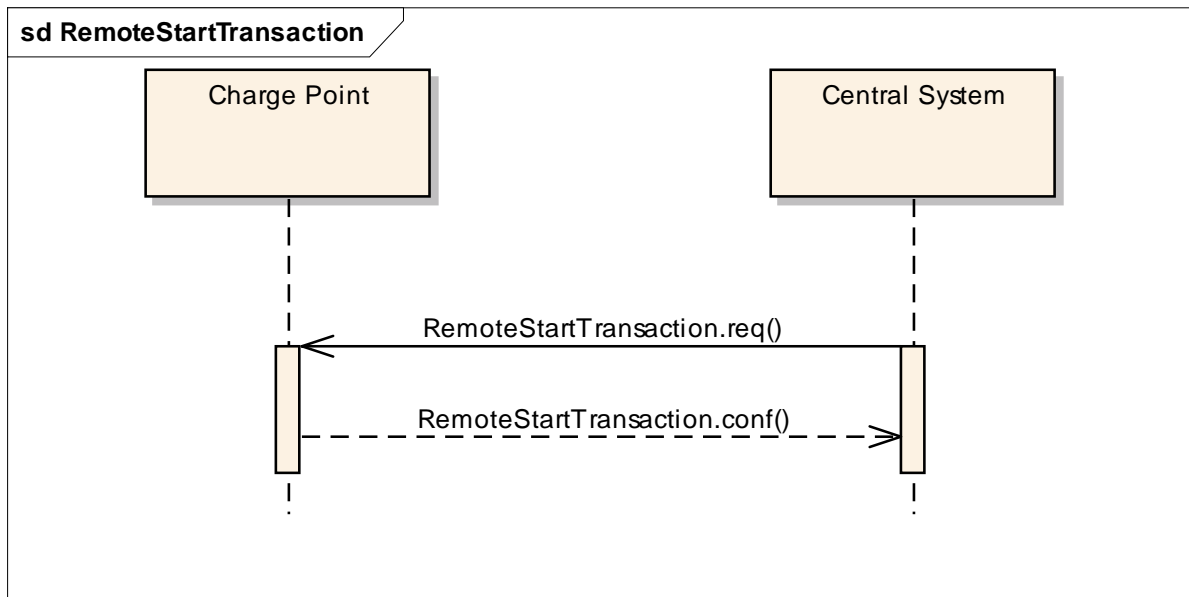
5.8 Get Local List Version



In order to support synchronisation of the local authorisation list, Central System can request a Charge Box for the version number of the local authorisation list. The Central System SHALL send a [GetLocalListVersion.req](#) PDU to request this value.

Upon receipt of a `GetLocalListVersion.req` PDU Charge Box SHALL respond with a [GetLocalListVersion.conf](#) PDU containing the version number of its local authorisation list. By convention, a version number of 0 (zero) is used to indicate that the local authorisation list is empty, and a version number of -1 is used to indicate that the Charge Box does not support local authorisation lists.

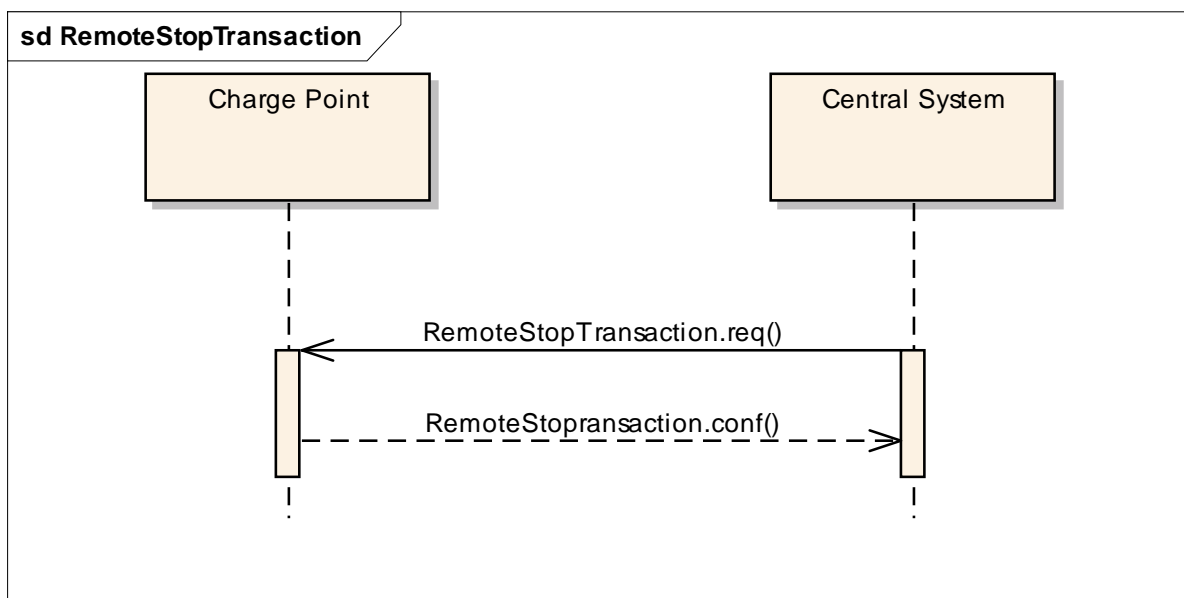
5.9 Remote Start Transaction



Central System can request a Charge Box to start a transaction by sending a [RemoteStartTransaction.req](#). Upon receipt Charge Box SHALL reply with [RemoteStartTransaction.conf](#) and a status indicating whether it is able to start a transaction or not.

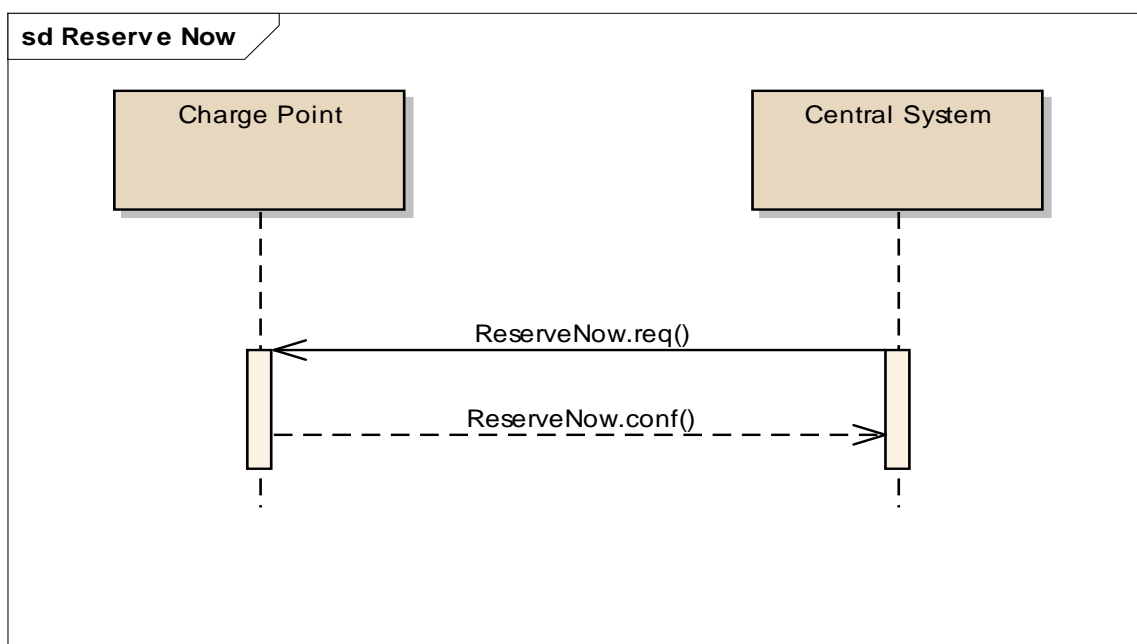
The RemoteStartTransaction.req SHALL contain an identifier (IdTag), which Charge Box SHALL use, if it is able to start a transaction, to send a StartTransaction.req to Central System. The transaction is started in the same way as described in [Start Transaction](#). The RemoteStartTransaction.req MAY contain a connector id if the transaction is to be started on a specific connector.

5.10 Remote Stop Transaction



Central System can request a Charge Box to stop a transaction by sending a [RemoteStopTransaction.req](#) to Charge Box with the identifier of the transaction. Charge Box SHALL reply with [RemoteStopTransaction.conf](#) to indicate whether it is indeed able to stop the transaction.

5.11 Reserve Now



A Central System can issue a Reserve Now command to a Charge Box to reserve a connector for use by a specific id-tag.

To request a reservation the Central System SHALL send a [ReserveNow.req](#) PDU to a Charge Box. The Central System MAY specify a specific connector to be reserved. Upon receipt of a ReserveNow.req PDU, the Charge Box SHALL respond with a [ReserveNow.conf](#) PDU.

If the reservationId in the request matches a reservation in the Charge Box, then the Charge Box SHALL replace that reservation with the new reservation in the request.

If the reservationId does not match any reservation in the Charge Box, then the Charge Box SHALL return the status value 'Accepted' if it succeeds in reserving a connector. The Charge Box SHALL return 'Occupied' if the Charge Box or the specified connector are occupied. The Charge Box SHALL also return 'Occupied' when the Charge Box or connector has been reserved for the same or another id-tag. The Charge Box SHALL return 'Faulted' if the Charge Box or the connector are in the Faulted state. The Charge Box SHALL return 'Unavailable' if the Charge Box or connector are in the Unavailable state. The Charge Box SHALL return 'Rejected' if it is configured not to accept reservations.

If the Charge Box accepts the reservation request, then it SHALL refuse charging for all incoming id-tags on the reserved connector, except when the incoming id-tag or the parent id-tag match the id-tag or parent id-tag of the reservation. If the connectorId in the reservation request is 0, then the Charge Box SHALL NOT reserve a specific connector, but SHALL make sure that at any time during the validity of the reservation, one connector remains available for the reserved id-tag. If the parent id-tag in the reservation has a value (it is optional), then in order to determine the parent id-tag that is associated with an incoming id-tag, the Charge Box MAY look it up in its local cache. If it is not found in the local cache, then the Charge Box SHALL send an [Authorize.req](#) for the incoming id-tag to the Central System. The Authorize.conf response contains the parent-id.

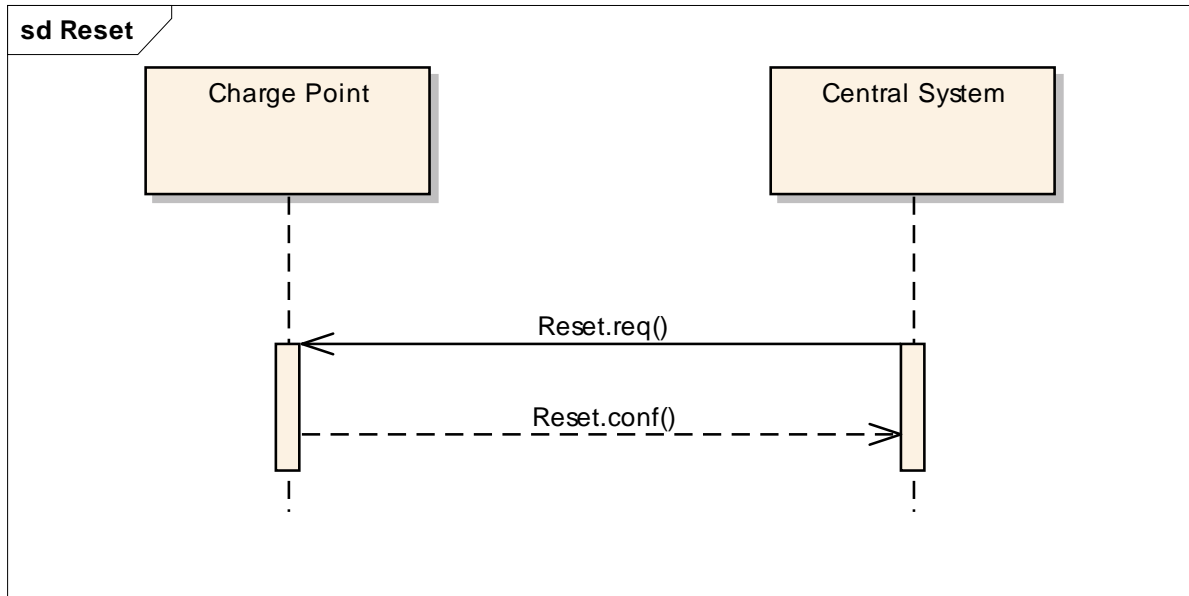
A reservation will be terminated on the Charge Box when either (1) a transaction is started for the reserved id-tag or parent id-tag and on the reserved connector or any connector when the reserved connectorId is 0, or (2) when the time specified in expiryDate is reached, or (3) when the Charge Box or connector are set to Faulted or Unavailable.

If a transaction for the reserved id-tag is started, then Charge Box SHALL send the reservationId in the [StartTransaction.req](#) PDU (see [Start Transaction](#)) to notify the Central System that the reservation is terminated.

When a reservation expires, the Charge Box SHALL terminate the reservation and make the connector available. Charge Box MAY send a status notification to notify

the Central System that the reserved connector is now available. This is not obligatory, because the Central System knows when reservations are due to expire.

5.12 Reset

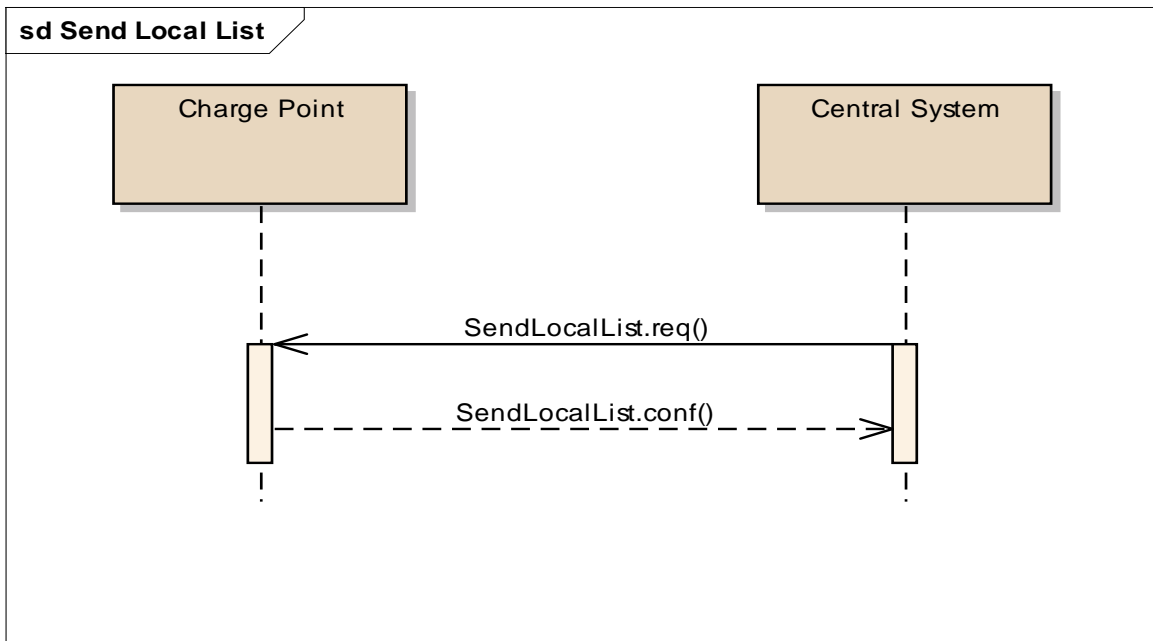


The Central System SHALL send a [Reset.req](#) PDU for requesting a Charge Box to reset itself. The Central System can request a hard or a soft reset. Upon receipt of a Reset.req PDU, the Charge Box SHALL respond with a [Reset.conf](#) PDU. The response PDU SHALL indicate whether the Charge Box is willing to reset itself.

At receipt of a soft reset, Charge Box SHALL return to its basic idle state. If any transaction is in progress it SHALL be terminated normally, as in [Stop Transaction](#).

At receipt of a hard reset Charge Box SHALL attempt to terminate any transaction in progress normally as in [Stop Transaction](#) and then perform a reboot.

5.13 Send Local List



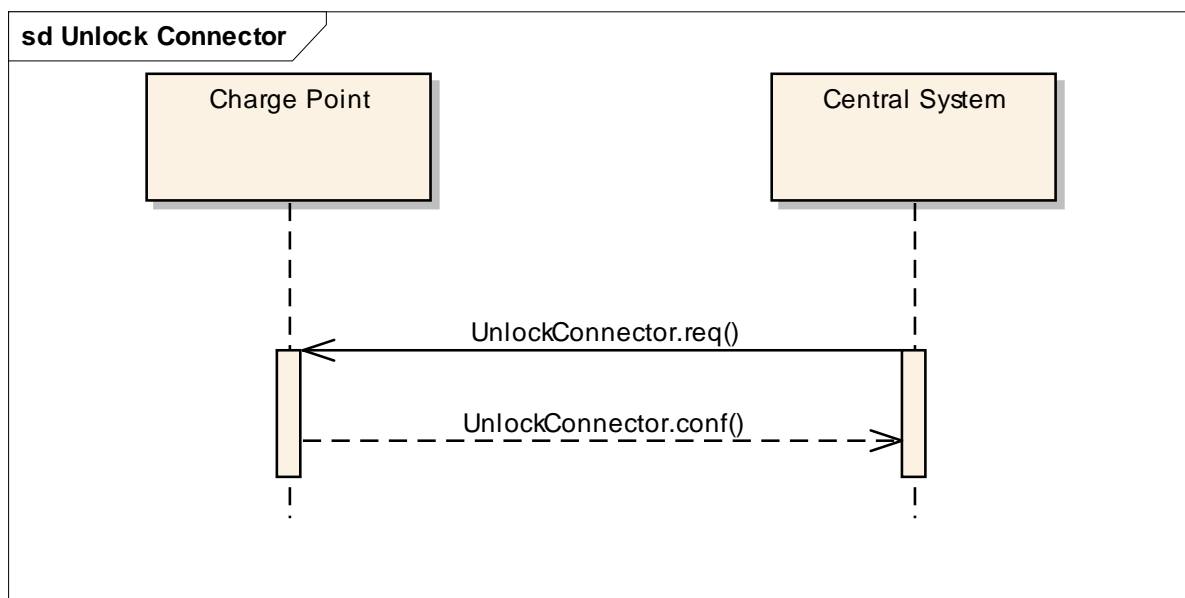
Central System can send a local authorisation list that a Charge Box can use for authorisation of id-tags. The list can be either a full list to replace the current list in the Charge Box or it can be a differential list with updates to be applied to the current list in the Charge Box.

The Central System SHALL send a [SendLocalList.req](#) PDU to send the list to a Charge Box. The SendLocalList.req PDU SHALL contain the type of update (full or differential) and the version number that the Charge Box MUST associate with the local authorisation list after it has been updated.

Upon receipt of an SendLocalList.req PDU, the Charge Box SHALL respond with a [SendLocalList.conf](#) PDU. The response PDU SHALL indicate whether the Charge Box has accepted the update of the local authorisation list. If the status is Failed or VersionMismatch and the updateType was Differential, then Central System SHOULD retry sending the full local authorisation list with updateType Full.

Both the SendLocalList.req and SendLocalList.conf PDUs have an optional element 'hash', that MAY be used to verify proper receipt of the list by Charge Box and Central System. The computation method of the hash value is not defined in this version of the specification, but may become subject to standardisation in the future. The presence of this hash element is not intended to require or encourage users of this OCPP version to implement any vendor or deployment specific hashing scheme, other than those who may be participating in pilot implementations of a proposed standardized canonical data hashing algorithm for possible inclusion in a future version release of OCPP.

5.14 Unlock Connector

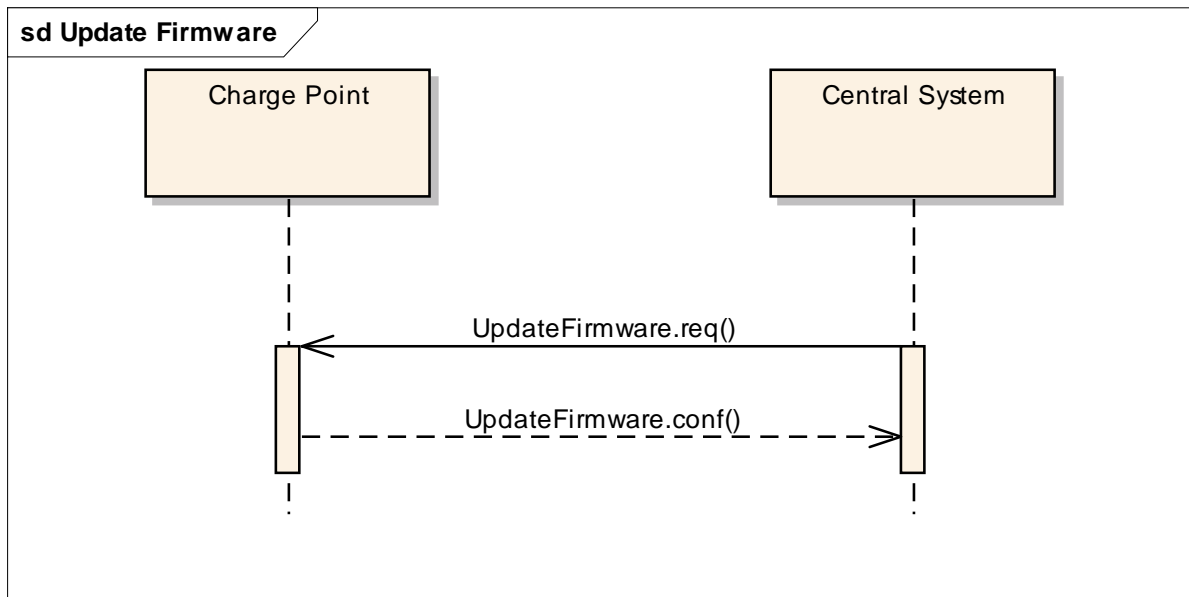


Central System can unlock a connector of a Charge Box. The Central System SHALL send an [UnlockConnector.req](#) PDU for requesting a Charge Box to unlock one of its connector.

Upon receipt of an `UnlockConnector.req` PDU, the Charge Box SHALL respond with a [UnlockConnector.conf](#) PDU. The response PDU SHALL indicate whether the Charge Box was able to unlock its connector.

If there was a transaction in progress on the specific connector, then Charge Box SHALL finish the transaction first as described in [Stop Transaction](#).

5.15 Update Firmware



Central System can notify a Charge Box that it needs to update its firmware. The Central System SHALL send an [UpdateFirmware.req](#) PDU to inform the Charge Box about the availability of new firmware. The PDU SHALL contain a date and time after which the Charge Box is allowed to retrieve the new firmware and the location from which the firmware can be downloaded.

Upon receipt of an UpdateFirmware.req PDU, the Charge Box SHALL respond with a [UpdateFirmware.conf](#) PDU. The Charge Box SHOULD start retrieving the firmware as soon as possible after retrieve-date.

6 Messages

6.1 Authorize.req

This contains the field definition of the Authorize.req PDU sent by the Charge Box to the Central System.

Field Name	Field Type	Card.	Description
idTag	IdToken	1..1	Mandatory This contains the identifier that needs to be authorized.

6.2 Authorize.conf

This contains the field definition of the Authorize.conf PDU sent by the Central System to the Charge Box as response to a Authorize.req PDU.

Field Name	Field Type	Card.	Description
idTagInfo	IdTagInfo	1..1	Mandatory.This contains information about authorisation status, expiry and parent id.

6.3 BootNotification.req

This contains the field definition of the BootNotification.req PDU sent by the Charge Box to the Central System.

Field Name	Field Type	Card.	Description
chargeBoxSerialNumber	ChargeBoxSerialNumber	0..1	Optional.This contains a value that identifies the serial number of the Charge Box inside the Charge Point..
chargePointModel	ChargePointModel	1..1	Mandatory. This contains a value that identifies the model of the ChargePoint.
chargePointSerialN	ChargePointSerial	0..1	Optional.This contains a value

number	Number		that identifies the serial number of the Charge Point.
chargePointVendor	ChargePointVendor	1..1	Mandatory. This contains a value that identifies the vendor of the ChargePoint.
firmwareVersion	FirmwareVersion	0..1	Optional. This contains the firmware version of the Charge Box.
iccid	Iccid	0..1	Optional. This contains the ICCID of the modem's SIM card.
imsi	Imsi	0..1	Optional. This contains the IMSI of the modem's SIM card.
meterSerialNumber	MeterSerialNumber	0..1	Optional. This contains the serial number of the main power meter of the Charge Point.
meterType	MeterType	0..1	Optional. This contains the type of the main power meter of the Charge Point.

6.4 BootNotification.conf

This contains the field definition of the BootNotification.conf PDU sent by the Central System to the Charge Box as response to a BootNotification.req PDU.

Field Name	Field Type	Card.	Description
currentTime	dateTime	1..1	Mandatory. This contains the Central System's current time.
heartbeatInterval	integer	1..1	Mandatory. This contains the interval in seconds of the heartbeats.
status	RegistrationStatus	1..1	Mandatory. This contains

			whether the Charge-Box has been registered within the System Central.
--	--	--	---

6.5 CancelReservation.req

This contains the field definition of the CancelReservation.req PDU sent by the Central System to the Charge Box.

Field Name	Field Type	Card.	Description
reservationId	integer	1..1	Mandatory. Id of the reservation to cancel.

6.6 CancelReservation.conf

This contains the field definition of the CancelReservation.conf PDU sent by the Charge Box to the Central System as response to a CancelReservation.req PDU.

Field Name	Field Type	Card.	Description
status	CancelReservation Status	1..1	Mandatory. This indicates the success or failure of the cancelling of a reservation by Central System.

6.7 ChangeAvailability.req

This contains the field definition of the ChangeAvailability.req PDU sent by the Central System to the Charge Box.

Field Name	Field Type	Card.	Description
connectorId	integer connectorId >= 0	1..1	Mandatory. The id of the connector for which availability needs to change. Id '0' (zero) is used if the availability of the charge point as a whole needs to change.
type	AvailabilityType	1..1	Mandatory. This contains the type of availability change

			that the Charge Box should perform.
--	--	--	-------------------------------------

6.8 ChangeAvailability.conf

This contains the field definition of the ChangeAvailability.conf PDU return by Charge Box to Central System.

Field Name	Field Type	Card.	Description
status	AvailabilityStatus	1..1	Mandatory. This indicates whether the Charge Box can perform the availability change.

6.9 ChangeConfiguration.req

This contains the field definition of the ChangeConfiguration.req PDU sent by Central System to Charge Box. It is RECOMMENDED that the content and meaning of the 'key' and 'value' attributes is agreed upon between Charge Box and Central System.

Field Name	Field Type	Card.	Description
key	string[50]	1..1	Mandatory. The name of the configuration setting to change. See 6.9.1 for standard configuration key names and associated values
value	string[500]	1..1	Mandatory. The new value as string for the setting. See 6.9.1 for standard configuration key names and associated values

6.9.1 Standard Configuration Key Names & Values

Key-Name	Format	Units	Key-Value
HeartBeatInterval	int	seconds	Interval of inactivity (no OCPP exchanges) with central system after which the charge point should send a Heartbeat.req PDU
ConnectionTimeOut	int	seconds	Interval (from successful authorization) until incipient charging session is automatically cancelled due to failure of EV user to (correctly) insert the charging cable connector(s) into the appropriate socket(s).
ResetRetries	int	times	Number of times to retry an unsuccessful reset of the charge point.
BlinkRepeat	int	times	Number of times to blink charge point lighting when signalling
LightIntensity	int	%	Percentage of maximum intensity at which to illuminate Charge Point lighting
MeterValueSampleInterval	int	seconds	Interval between sampling of metering (or other) data, intended to be transmitted by "MeterValues" PDUs. For charging session data (ConnectorID<>0), samples are acquired and transmitted periodically at this interval from the start of the charging transaction. A value of "0" (numeric zero), by convention, is to be interpreted to mean that no sampled data should be transmitted.
ClockAlignedDataInterval	int	seconds	Size (in seconds) of the clock-aligned data interval. This is the size (in seconds) of the set of evenly spaced aggregation intervals per day, starting at 00:00:00 (midnight). For example, a value of 900 (15 minutes) indicates that every day should be broken into 96 15-minute intervals. When clock aligned data is being transmitted, the interval in question is identified by the start time and (optional)

			<p>duration interval value, represented according to the ISO8601 standard. All "per-period" data (e.g. energy readings) should be accumulated (for "flow" type measurands such as energy), or averaged (for other values) across the whole interval (or partial interval, at the beginning or end of a charging session), and transmitted (if so enabled) at the end of each interval, bearing the interval start time timestamp.</p> <p>A value of "0" (numeric zero), by convention, is to be interpreted to mean that no clock-aligned data should be transmitted.</p>
MeterValuesSampledData	CSL ¹		<p>Sampled measurands to be included in a MeterValues.req PDU, every MeterValueSampleInterval seconds.</p> <p>Default: "Energy.Active.Import.Register"</p>
MeterValuesAlignedData	CSL		<p>Clock-aligned measurand(s) to be included in a MeterValues.req PDU, every ClockAlignedDataInterval seconds</p>
StopTxnSampledData	CSL		<p>Sampled measurands to be included in the TransactionData element of StopTransaction.req PDU, every MeterValueSampleInterval seconds from the start of the charging session</p>
StopTxnAlignedData	CSL		<p>Clock-aligned periodic measurand(s) to be included in the TransactionData element of StopTransaction.req MeterValues.req PDU for every ClockAlignedDataInterval of the charging session</p>

¹ CSL: Comma Separated List

The following configuration keys have been maintained for compatibility, but will become deprecated in the next release:

Key-Name	Format	Units	Key-Value
ProximityLockRetries	int	times	

ProximityContactRetrie s	int	times	
ChargePointId	string	N/A	

6.10 ChangeConfiguration.conf

This contains the field definition of the ChangeConfiguration.conf PDU returned from Charge Box to Central System.

Field Name	Field Type	Card.	Description
status	ConfigurationStatu s	1..1	Mandatory. Returns whether configuration change has been accepted.

6.11 ClearCache.req

This contains the field definition of the ClearCache.req PDU sent by the Central System to the Charge Box.

No fields are defined.

6.12 ClearCache.conf

This contains the field definition of the ClearCache.conf PDU sent by the Charge Box to the Charge Box as response to a ClearCache.req PDU.

Field Name	Field Type	Card.	Description
status	ClearCacheStatus	1..1	

6.13 DataTransfer.req

This contains the field definition of the DataTransfer.req PDU sent either by the Central System to the Charge Box or vice versa.

Field Name	Field Type	Card.	Description
vendorId	String[255]	1..1	Mandatory. This identifies the Vendor specific

			implementation
messageId	String[50]	0..1	Optional. Additional identification field
data	Text Length undefined	0..1	Optional. Data without specified length or format.

6.14 DataTransfer.conf

This contains the field definition of the DataTransfer.conf PDU sent by the Charge Box to the Central System or vice versa as response to a DataTransfer.req PDU.

Field Name	Field Type	Card.	Description
status	DataTransferStatus	1..1	Mandatory. This indicates the success or failure of the data transfer.
data	Text Length undefined	0..1	Optional. Data in response to request.

6.15 DiagnosticsStatusNotification.req

This contains the field definition of the DiagnosticsStatusNotification.req PDU sent by the Charge Box to the Central System.

Field Name	Field Type	Card.	Description
status	DiagnosticsStatus	1..1	Mandatory. This contains the status of the diagnostics upload.

6.16 DiagnosticsStatusNotification.conf

This contains the field definition of the DiagnosticsStatusNotification.conf PDU sent by the Central System to the Charge Box as response to a DiagnosticsStatusNotification.req PDU.

No fields are defined.

6.17 FirmwareStatusNotification.req

This contains the field definition of the FirmwareStatus.req PDU sent by the Charge Box to the Central System.

Field Name	Field Type	Card.	Description
status	FirmwareStatus	1..1	Mandatory. This contains the progress status of the firmware installation.

6.18 FirmwareStatusNotification.conf

This contains the field definition of the FirmwareStatus.conf PDU sent by the Central System to the Charge Box as response to a FirmwareStatus.req PDU.

No fields are defined.

6.19 GetConfiguration.req

This contains the field definition of the GetConfiguration.req PDU sent by the the Central System to the Charge Box.

Field Name	Field Type	Card.	Description
key	string[50]	0..*	Optional. List of keys for which the configuration value is requested.

6.20 GetConfiguration.conf

This contains the field definition of the GetConfiguration.conf PDU sent by Charge Box the to the Central System in response to a GetConfiguration.req.

Field Name	Field Type	Card.	Description
configurationKey	KeyValue	0..*	Mandatory. List of requested or known keys
unknownKey	string[50]	0..*	Optional. Requested keys that are unknown

6.21 GetDiagnostics.req

This contains the field definition of the GetDiagnostics.req PDU sent by the Central System to the Charge Box.

Field Name	Field Type	Card.	Description
location	anyURI	1..1	Mandatory. This contains the location (directory) where the diagnostics file shall be uploaded to.
retries	integer	0..1	Optional. This specifies how many times Charge Box must try to upload the diagnostics before giving up. If this field is not present, it is left to Charge Box to decide how many times it wants to retry.
retryInterval	integer	0..1	Optional. The interval in seconds after which a retry may be attempted. If this field is not present, it is left to Charge Box to decide how long to wait between attempts.
startTime	dateTime	0..1	Optional. This contains the date and time of the oldest logging information to include in the diagnostics.
stopTime	dateTime	0..1	Optional. This contains the date and time of the latest logging information to include in the diagnostics.

6.22 GetDiagnostics.conf

This contains the field definition of the GetDiagnostics.conf PDU sent by the Charge Box to the Central System as response to a GetDiagnostics.req PDU.

Field Name	Field Type	Card.	Description
fileName	string[255]	0..1	Optional. This contains the name of the file with diagnostic information that will be uploaded. This attribute is not present when no diagnostic information is available.

6.23 GetLocalListVersion.req

This contains the field definition of the GetLocalListVersion.req PDU sent by the Central System to the Charge Box.

No fields are defined.

6.24 GetLocalListVersion.conf

This contains the field definition of the GetLocalListVersion.conf PDU sent by the Charge Box to Central System in response to a GetLocalList.req PDU.

Field Name	Field Type	Card.	Description
listVersion	integer	1..1	Mandatory. This contains the current version number of the local authorisation list in the Charge Box.

6.25 Heartbeat.req

This contains the field definition of the Heartbeat.req PDU sent by the Charge Box to the Central System.

No fields are defined.

6.26 Heartbeat.conf

This contains the field definition of the Heartbeat.conf PDU sent by the Central System to the Charge Box as response to a Heartbeat.req PDU.

Field Name	Field Type	Card.	Description
------------	------------	-------	-------------

currentTime	dateTime	1..1	Mandatory. This contains the current time of the Central System.
--------------------	----------	------	--

6.27 MeterValues.req

This contains the field definition of the MeterValues.req PDU sent by the Charge Box to the Central System.

Field Name	Field Type	Card.	Description
connectorId	integer connectorId >= 0	1..1	Mandatory. This contains a number (>0) designating a connector of the Charge Point. '0' (zero) is used to designate the main power meter.
transactionId	integer	0..1	Optional. The transaction to which these meter samples are related.
values	MeterValue	0..*	Optional. The sampled meter values with timestamps.

6.28 MeterValues.conf

This contains the field definition of the MeterValues.conf PDU sent by the Central System to the Charge Box as response to a MeterValues.req PDU.

No fields are defined.

6.29 RemoteStartTransaction.req

This contains the field definitions of the RemoteStartTransaction.req PDU sent to Charge Box by Central System.

Field Name	Field Type	Card.	Description
connectorId	int connectorId > 0	0..1	Optional. Number of the connector on which to start the transaction.

idTag	IdToken	1..1	Mandatory. The identifier that Charge Box must use to start a transaction.

6.30 RemoteStartTransaction.conf

This contains the field definitions of the RemoteStartTransaction.conf PDU sent from Charge Box to Central System.

Field Name	Field Type	Card.	Description
status	RemoteStartStopStatus	1..1	Mandatory. Status indicating whether Charge Box accepts the request to start a transaction.

6.31 RemoteStopTransaction.req

This contains the field definitions of the RemoteStopTransaction.req PDU sent to Charge Box by Central System.

Field Name	Field Type	Card.	Description
transactionId	integer	1..1	Mandatory. The identifier of the transaction which Charge Box is requested to stop.

6.32 RemoteStopTransaction.conf

This contains the field definitions of the RemoteStopTransaction.conf PDU sent from Charge Box to Central System.

Field Name	Field Type	Card.	Description
status	RemoteStartStopStatus	1..1	Mandatory. Status indicating whether Charge Box accepts the request to stop a transaction.

6.33 ReserveNow.req

This contains the field definition of the ReserveNow.req PDU sent by the Central System to the Charge Box.

Field Name	Field Type	Card.	Description
connectorId	integer connectorId >= 0	1..1	Mandatory. This contains the id of the connector to be reserved. A value of 0 means that the reservation is not for a specific connector.
expiryDate	dateTime	1..1	Mandatory. This contains the date and time when the reservation ends.
idTag	IdToken	1..1	Mandatory. The identifier for which the Charge Box has to reserve a connector.
parentIdTag	IdToken	0..1	Optional. The parent id-tag.
reservationId	integer	1..1	Mandatory. Unique id for this reservation.

6.34 ReserveNow.conf

This contains the field definition of the ReserveNow.conf PDU sent by the Charge Box to the Central System in response to a ReserveNow.req PDU.

Field Name	Field Type	Card.	Description
status	ReservationStatus	1..1	Mandatory. This indicates the success or failure of the reservation.

6.35 Reset.req

This contains the field definition of the Reset.req PDU sent by the Central System to the Charge Box.

Field Name	Field Type	Card.	Description
type	ResetType	1..1	Mandatory. This contains the type of reset that the Charge Box should perform.

6.36 Reset.conf

This contains the field definition of the Reset.conf PDU sent by the Charge Box to the Central System as response to a Reset.req PDU.

Field Name	Field Type	Card.	Description
status	ResetStatus	1..1	Mandatory. This indicates whether the Charge Box can perform the reset.

6.37 SendLocalList.req

This contains the field definition of the SendLocalList.req PDU sent by the Central System to the Charge Box.

Field Name	Field Type	Card.	Description
hash	string[64]	0..1	Optional. A hash value calculated over the content of the localAuthorisationList elements. It can be used by Charge Box to verify correct receipt of the list.
listVersion	integer	1..1	Mandatory. In case of a full update this is the version number of the full list. In case of a differential update it is the version number of the list after the update has been applied.
localAuthorisationList	AuthorisationData	0..*	Optional. In case of a full update this contains the list of values that form the new local authorisation list. In case of a

			differential update it contains the changes to be applied to the local authorisation list in the Charge Box.
updateType	UpdateType	1..1	Mandatory. This contains the type of update (full or differential) of this request.

6.38 SendLocalList.conf

This contains the field definition of the SendLocalList.conf PDU sent by the Charge Box to the Central System as response to a SendLocalList.req PDU.

Field Name	Field Type	Card.	Description
hash	string[64]	0..1	Optional. A hash value calculated over the content of the new local authorisation list in the Charge Box. It can be used by Central System to verify that the update has correctly been applied by the Charge Box.
status	UpdateStatus	1..1	Mandatory. This indicates whether the Charge Box has successfully received and applied the update of the local authorisation list.

6.39 StartTransaction.req

This section contains the field definition of the StartTransaction.req PDU sent by the Charge Box to the Central System.

Field Name	Field Type	Card.	Description
connectorId	integer connectorId > 0	1..1	Mandatory. This identifies which connector of the Charge Box is used.

idTag	IdToken	1..1	Mandatory. This contains the identifier for which a transaction has to be started.
meterStart	integer	1..1	Mandatory. This contains the meter value in Wh for the connector at start of the transaction.
reservationId	integer	0..1	Optional. This contains the id of the reservation that terminates as a result of this transaction.
timestamp	dateTime	1..1	Mandatory. This contains the date and time on which the transaction is started.

6.40 StartTransaction.conf

This contains the field definition of the StartTransaction.conf PDU sent by the Central System to the Charge Box as response to a StartTransaction.req PDU.

Field Name	Field Type	Card.	Description
idTagInfo	IdTagInfo	1..1	Mandatory. This contains information about authorisation status, expiry and parent id.
transactionId	integer	1..1	Mandatory. This contains the transaction id supplied by the Central System.

6.41 StatusNotification.req

This contains the field definition of the StatusNotification.req PDU sent by the Charge Box to the Central System.

Field Name	Field Type	Card.	Description
------------	------------	-------	-------------

connectorId	integer connectorId >= 0	1..1	Mandatory. The id of the connector for which the status is reported. Id '0' (zero) is used if the status is for the charge point as a whole.
errorCode	ChargePointErrorC ode	1..1	Mandatory. This contains the error code reported by the Charge Point.
info	string[50]	0..1	Optional. Additional free format information related to the error.
status	ChargePointStatus	1..1	Mandatory. This contains the current status of the Charge Point.
timestamp	dateTime	0..1	Optional. The time for which the status is reported. If absent time of receipt of the message will be assumed.
vendorId	string[255]	0..1	Optional. This identifies the vendor-specific implementation.
vendorErrorCode	string[50]	0..1	Optional. This contains the vendor-specific error code.

6.42 StatusNotification.conf

This contains the field definition of the StatusNotification.conf PDU sent by the Central System to the Charge Box as response to an StatusNotification.req PDU.

No fields are defined.

6.43 StopTransaction.req

This contains the field definition of the StopTransaction.req PDU sent by the Charge Box to the Central System.

Field Name	Field Type	Card.	Description
------------	------------	-------	-------------

idTag	IdToken	0..1	Optional. This contains the identifier which requested to stop the charging. It is optional because a charge point may terminate charging without the presence of an id-tag, e.g. in case of a reset.
meterStop	integer	1..1	Mandatory. This contains the meter value in Wh for the connector at end of the transaction.
timestamp	dateTime	1..1	Mandatory. This contains the date and time on which the transaction is stopped.
transactionId	integer	1..1	Mandatory. This contains the transaction-id as received by the StartTransaction.conf.
transactionData	TransactionData	0..*	Optional. This contains transaction usage details relevant for billing purposes.

6.44 StopTransaction.conf

This contains the field definition of the StopTransaction.conf PDU sent by the Central System to the Charge Box as response to a StopTransaction.req PDU.

Field Name	Field Type	Card.	Description
idTagInfo	IdTagInfo	0..1	Optional. This contains information about authorisation status, expiry and parent id. It is optional, because a transaction may have been stopped without an identifier.

6.45 UnlockConnector.req

This contains the field definition of the UnlockConnector.req PDU sent by the Central System to the Charge Box.

Field Name	Field Type	Card.	Description
connectorId	integer connectorId > 0	1..1	Mandatory. This contains the identifier of the connector to be unlocked.

6.46 UnlockConnector.conf

This contains the field definition of the UnlockConnector.conf PDU sent by the Charge Box to the Central System as response to an UnlockConnector.req PDU.

Field Name	Field Type	Card.	Description
status	UnlockStatus	1..1	Mandatory. This indicates whether the Charge Box has unlocked the connector.

6.47 UpdateFirmware.req

This contains the field definition of the UpdateFirmware.req PDU sent by the Central System to the Charge Box.

Field Name	Field Type	Card.	Description
location	anyURI	1..1	Mandatory. This contains a string containing a URI pointing to a location from which to retrieve the firmware.
retries	integer	0..1	Optional. This specifies how many times Charge Box must try to download the firmware before giving up. If this field is not present, it is left to Charge Box to decide how

			many times it wants to retry.
retrieveDate	dateTime	1..1	Mandatory. This contains the date and time after which the Charge Box must retrieve the (new) firmware.
retryInterval	integer	0..1	Optional. The interval in seconds after which a retry may be attempted. If this field is not present, it is left to Charge Box to decide how long to wait between attempts.

6.48 UpdateFirmware.conf

This contains the field definition of the UpdateFirmware.conf PDU sent by the Charge Box to the Central System as response to a UpdateFirmware.req PDU.

No fields are defined.

7 Types

7.1 AuthorisationData

Class

Elements that constitute an entry of a local authorisation list update.

Field Name	Field Type	Card.	Description
idTag	IdToken	1..1	Mandatory. The identifier to which this authorisation applies.
idTagInfo	IdTagInfo	0..1	Optional. This contains information about authorisation status, expiry and parent id. If this element is present, then this entry SHALL be added or updated in the local authorisation list. If this element is absent, then the entry for this idtag in the local authorisation list SHALL be deleted.

7.2 AuthorizationStatus

Enumeration

Status as response to an [Authorize.req](#).

Value	Description
Accepted	Identifier is allowed for charging.
Blocked	Identifier has been blocked. Not allowed for charging.
Expired	Identifier has expired. Not allowed for charging.
Invalid	Identifier is unknown. Not allowed for charging.
ConcurrentTx	Identifier is already involved in another transaction and multiple transactions are not allowed. (Only relevant for a StartTransaction.req.)

7.3 AvailabilityStatus

Enumeration

Status returned in response to [ChangeAvailability.req](#).

Value	Description
Accepted	Request has been accepted and will be executed.
Rejected	Request has not been accepted and will not be executed.
Scheduled	Request has been accepted and will be executed when transaction(s) in progress have finished.

7.4 AvailabilityType

Enumeration

Requested availability change in [ChangeAvailability.req](#).

Value	Description
Inoperative	Charge point is not available for charging.
Operative	Charge point is available for charging.

7.5 CancelReservationStatus

Enumeration

Status in [CancelReservation.conf](#).

Value	Description
Accepted	Reservation for the identifier has been cancelled.
Rejected	Reservation could not be cancelled, because there is no reservation active for the identifier.

7.6 ChargeBoxSerialNumber

Class

String for holding serial number value in BootNotification.req. It is a case insensitive string.

Field Name	Field Type	Description
ChargeBoxS	String[25]	String is case insensitive.

erialNumber		
--------------------	--	--

7.7 ChargePointErrorCode

Enumeration

Charge Point status reported in [StatusNotification.req](#).

Value	Description
ConnectorLockFailure	Failure to lock or unlock connector.
GroundFailure	Ground fault circuit interrupter has been activated.
HighTemperature	Temperature inside charge point is too high.
Mode3Error	Problem with Mode 3 connection to vehicle.
NoError	No error to report.
OtherError	Other type of error. More information in vendorErrorCode.
OverCurrentFailure	Over current protection device has tripped.
PowerMeterFailure	Failure to read power meter.
PowerSwitchFailure	Failure to control power switch.
ReaderFailure	Failure with ID tag reader.
ResetFailure	Unable to perform a reset.
UnderVoltage	Voltage has dropped below an acceptable level.
WeakSignal	Wireless communication device reports a weak signal.

7.8 ChargePointModel

Class

String for holding a charge point model value in BootNotification.req. It is a case insensitive string.

Field Name	Field Type	Description
------------	------------	-------------

ChargePoint Model	String[20]	String is case insensitive.
--------------------------	------------	-----------------------------

7.9 ChargePointSerialNumber

Class

String for holding serial number value in [BootNotification.req](#). It is a case insensitive string.

Field Name	Field Type	Description
ChargePoint SerialNumber	String[25]	String is case insensitive.

7.10 ChargePointStatus

Enumeration

Status reported in [StatusNotification.req](#). A status can be reported for the charge point as a whole (connectorId = 0) or for a specific connector.

States considered Operative are: *Available, Occupied, Reserved*.

States considered Inoperative are: *Unavailable, Faulted*.

Value	Description
Available	Charge point: At least one connector is available for charging. Connector: Connector is available for charging. (Operative).
Occupied	Charge point: All connectors of charge point are occupied. Connector: Connector is occupied. (Operative).
Reserved	Charge point: All connectors of charge point are reserved. Connector: Connector is reserved. (Operative).
Unavailable	Charge point or connector is not available for charging. It has been explicitly set to unavailable. (Inoperative).

Faulted	Charge point or connector has reported an error and is no longer available. (Inoperative).
----------------	--

7.11 ChargePointVendor

Class

String for holding a charge point vendor value in BootNotification.req. It is a case insensitive string.

Field Name	Field Type	Description
ChargePoint Vendor	String[20]	String is case insensitive.

7.12 ClearCacheStatus

Enumeration

Response to [ClearCache.req](#).

Value	Description
Accepted	Command has been executed.
Rejected	Command has not been executed.

7.13 ConfigurationStatus

Enumeration

Status in [ChangeConfiguration.conf](#).

Value	Description
Accepted	Configuration key supported and setting has been changed.
Rejected	Configuration key supported, but setting could not be changed.
NotSupported	Configuration key is not supported.

7.14 DataTransferStatus

Enumeration

Status in [DataTransfer.conf](#).

Value	Description
Accepted	Message has been accepted and the contained request is accepted.
Rejected	Message has been accepted but the contained request is rejected.
UnknownMessageId	Message could not be interpreted due to unknown messageId string.
UnknownVendorId	Message could not be interpreted due to unknown vendorId string.

7.15 DiagnosticsStatus

Enumeration

Status in [DiagnosticsStatusNotification.req](#).

Value	Description
Uploaded	Diagnostics information has been uploaded.
UploadFailed	Uploading of diagnostics failed.

7.16 FirmwareStatus

Enumeration

Status of a firmware download as reported in [FirmwareStatusNotification.req](#).

Value	Description
Downloaded	New firmware has been downloaded by charge point.
DownloadFailed	Charge point failed to download firmware.
InstallationFailed	Installation of new firmware has failed.
Installed	New firmware has successfully been installed in charge point.

7.17 FirmwareVersion

Class

String for holding a firmware version value in BootNotification.req. It is a case insensitive string.

Field Name	Field Type	Description
FirmwareVersion	String[50]	String is case insensitive.

7.18 Iccid

Class

String for holding ICCID value, like in BootNotification.req. It is a case insensitive string.

Field Name	Field Type	Description
Iccid	String[20]	String is case insensitive.

7.19 IdTagInfo

Class

Contains status information about an identifier. It is returned in Authorisation, Start Transaction and Stop Transaction responses.

Field Name	Field Type	Description
expiryDate	dateTime	Optional. This contains the date at which id-tag should be removed from the Local List.
parentIdTag	IdToken	Optional. This contains the parent-identifier.
status	AuthorizationStatus	Mandatory. This contains whether the id-tag has been accepted or not by the Central System.

7.20 IdToken

Class

Contains the identifier to use for authorisation. It is a case insensitive string. In future releases this may become a complex type to support multiple forms of identifiers.

Field Name	Field Type	Description
IdToken	String[20]	Mandatory. IdToken is case insensitive.

7.21 Imsi

Class

String for holding IMSI value, like in BootNotification.req. It is a case insensitive string.

Field Name	Field Type	Description
Imsi	String[20]	String is case insensitive.

7.22 KeyValue

Class

Contains information about a specific configuration key. It is returned in [GetConfiguration.conf](#).

Name	Field Type	Card.	Description
key	String[50]	1..1	Mandatory.
readonly	Boolean	1..1	Mandatory. False if the value can be set with the ChangeConfiguration message.
value	string[500]	0..1	Optional. If key is known but not set, this attribute may be absent.

7.23 Location

Enumeration

Allowable values of the optional "location" attribute of a value element in [MeterValue](#).

Value	Description
Inlet	Measurement at network ("grid") inlet connection
Outlet	Measurement at an EVSE connection outlet (Connector). Default value
Body	Measurement inside body of charge point (e.g. Temperature)

7.24 Measurand

Enumeration

Allowable values of the optional "measurand" attribute of a Value element, as used in [MeterValues.req](#) and [StopTransaction.req](#) messages. Default value of "measurand" attribute of Value is always "Energy.Active.Import.Register"

Value	Description
Energy.Active.Export.Register	Energy exported by EV (Wh or kWh)
Energy.Active.Import.Register	Energy imported by EV (Wh or kWh)
Energy.Reactive.Export.Register	Reactive energy exported by EV (varh or kvarh)
Energy.Reactive.Import.Register	Reactive energy imported by EV (varh or kvarh)
Energy.Active.Export.Interval	Energy exported by EV (Wh or kWh)
Energy.Active.Import.Interval	Energy imported by EV (Wh or kWh)
Energy.Reactive.Export.Interval	Reactive energy exported by EV. (varh or kvarh)
Energy.Reactive.Import.Interval	Reactive energy imported by EV. (varh or kvarh)
Power.Active.Export	Instantaneous active power exported by EV. (W or kW)
Power.Active.Import	Instantaneous active power imported by EV. (W or kW)

Power.Reactive.Export	Instantaneous reactive power exported by EV. (var or kvar)
Power.Reactive.Import	Instantaneous reactive power imported by EV. (var or kvar)
Current.Export	Instantaneous current flow from EV
Current.Import	Instantaneous current flow to EV
Voltage	AC RMS supply voltage
Temperature	Temperature reading inside charge point.

7.25 MeterSerialNumber

Class

String for holding serial number value in BootNotification.req. It is a case insensitive string.

Field Name	Field Type	Description
MeterSerial Number	String[25]	String is case insensitive.

7.26 MeterType

Class

String for holding meter type value in BootNotification.req. It is a case insensitive string.

Field Name	Field Type	Description
MeterType	String[25]	String is case insensitive.

7.27 MeterValue

Class

Collection of meter values in [MeterValues.req](#). Each value can optionally be accompanied by one or more attributes.

Field Name	Field Type	Card.	Description
------------	------------	-------	-------------

timestamp	dateTime	1..1	Mandatory. Timestamp for measured value(s).
value	string	1..*	Mandatory. Values for one or more measurands. Value as a "Raw" (decimal) number or "SignedData". Field Type is "string" to allow for digitally signed data readings. Decimal numeric values are also acceptable to allow fractional values for measurands such as Temperature and Current.
attribute: context	ReadingContext	0..1	Optional. Type of detail value: start, end or sample. Default = "Sample.Periodic"
attribute: format	ValueFormat	0..1	Optional. Raw or signed data. Default = "Raw"
attribute: measurand	Measurand	0..1	Optional. Type of measurement. Default = "Energy.Active.Import.Register"
attribute: location	Location	0..1	Optional. Location of measurement. Default="Outlet"
attribute: unit	UnitOfMeasure	0..1	Optional. Unit of the value. Default = "Wh" if the (default) measurand is an "Energy" type.

7.28 ReadingContext

Enumeration

Values of the context attribute in [of](#) a value in [MeterValue](#).

Value	Description
-------	-------------

Interruption.Begin	Value taken at start of interruption.
Interruption.End	Value taken when resuming after interruption.
Sample.Clock	Value taken at clock aligned interval.
Sample.Periodic	Value taken as periodic sample relative to start time of transaction.
Transaction.Begin	Value taken at end of transaction.
Transaction.End	Value taken at start of transaction.

7.29 NameString

Class

String for holding name value, like Vendor or Model in [BootNotification.req](#). It is a case insensitive string.

Field Name	Field Type	Description
NameString	String[20]	String is case insensitive.

7.30 RegistrationStatus

Enumeration

Result of registration in response to [BootNotification.req](#).

Value	Description
Accepted	Charge point is accepted by Central System.
Rejected	Charge point is not accepted by Central System. This happens when the charge point id is not known by Central System.

7.31 RemoteStartStopStatus

Enumeration

The result of a [RemoteStartTransaction.req](#) or [RemoteStopTransaction.req](#) request.

Value	Description
-------	-------------

Accepted	Command will be executed.
Rejected	Command will not be executed.

7.32 ReservationStatus

Enumeration

Status in [ReserveNow.conf](#).

Value	Description
Accepted	Reservation has been made.
Faulted	Reservation has not been made, because connectors or specified connector are in a faulted state.
Occupied	Reservation has not been made. All connectors or the specified connector are occupied.
Rejected	Reservation has not been made. Charge Box is not configured to accept reservations.
Unavailable	Reservation has not been made, because connectors or specified connector are in an unavailable state.

7.33 ResetStatus

Enumeration

Result of [Reset.req](#).

Value	Description
Accepted	Command will be executed.
Rejected	Command will not be executed.

7.34 ResetType

Enumeration

Type of reset requested by [Reset.req](#).

Value	Description
-------	-------------

Hard	Full reboot of charge box software.
Soft	Return to initial status, gracefully terminating any transactions in progress.

7.35 SerialNumberString

Class

String for holding a serial number value, like in `BootNotification.req`. It is a case insensitive string.

Field Name	Field Type	Description
SerialNumberString	String[25]	String is case insensitive.

7.36 TransactionData

Class

Details of transaction usage in [StopTransaction.req](#).

Field Name	Field Type	Card.	Description
values	MeterValue	0..*	Optional. Meter values related to a transaction.

7.37 UnitOfMeasure

Enumeration

Allowable values of the optional "unit" attribute of a Value element, as used in [MeterValues.req](#) and [StopTransaction.req](#) messages. Default value of "unit" attribute of Value is always "Wh".

Value	Description
Wh	Watt-hours (energy). Default.
kWh	kiloWatt-hours (energy).
varh	Var-hours (reactive energy).
kvarh	kilovar-hours (reactive energy).

W	Watts (power).
kW	kilowatts (power).
var	Vars (reactive power).
kvar	kilovars (reactive power).
Amp	Amperes (current).
Volt	Voltage (r.m.s. AC).
Celsius	Degrees (temperature).

7.38 UnlockStatus

Enumeration

Status in response to [UnlockConnector.req.](#)

Value	Description
Accepted	Command will be executed.
Rejected	Command will not be executed.

7.39 UpdateStatus

Enumeration

Type of update for a SendLocalList.req.

Value	Description
Accepted	Local authorisation list successfully updated.
Failed	Failed to update the local authorisation list.
HashError	The hash value computed over the received values does not match provided hash value.
NotSupported	Update of local authorisation list is not supported by Charge Box.
VersionMismatch	Version number in the request for a differential update is less or equal then version number of current list.

7.40 UpdateType

Enumeration

Type of update for a SendLocalList.req.

Value	Description
Differential	Indicates that the current local authorisation list must be updated with the values in this message.
Full	Indicates that the current local authorisation list must be replaced by the values in this message.

7.41 ValueFormat

Enumeration

Format that specifies how the value element in [MeterValue](#) is to be interpreted.

Value	Description
Raw	Data is to be interpreted as integer/decimal numeric data.
SignedData	Data is represented as a signed binary data block, encoded as hex data.

7.42 VersionString

Class

String for holding a version value, like in BootNotification.req. It is a case insensitive string.

Field Name	Field Type	Description
VersionString	String[50]	String is case insensitive.

8 Binding to Transport Protocol

This section describes how the OCPP PDUs can be conveyed over SOAP.

The rationale behind using SOAP as a transport is that SOAP already provides the infrastructure of sending messages. SOAP has a good support in the industry, which results in tools that improve the ease of implementing the protocol.

The used version of SOAP MUST be 1.2. See [SOAP].

8.1 Charge Box Identity

To be able for the Central System to identify uniquely a Charge Box, a Charge Box MUST send its identifier in the SOAP header of each request PDU. The header name "chargeBoxIdentity" SHALL be treated as case insensitive. For example:

```
<!-- Header with the identifier of the sending Charge Box -->
<ns:chargeBoxIdentity>CB1234</ns:chargeBoxIdentity>
```

When a Central System needs to send requests to a Charge Box, the Central System MUST send in each request the "chargeBoxIdentity" for which Charge Box the request is intended. If the receiving Charge Box is not the intended one, then the Charge Box MUST send a SOAP Fault Response message, indicating that the identity is wrong (e.g. sub-code is "IdentityMismatch").

8.2 Fault Response

In cases where the receiving party (e.g. Charge Box or Central System) cannot process the request and the corresponding confirmation PDU doesn't have to ability to report the error, then the SOAP Fault Response Message SHOULD be used. This can be used, for instance, when the operation is not implemented or when an internal error has occurred.

If a sender receives a SOAP Fault Response from the receiver, the sender SHOULD NOT resend the same message.

The following fault codes can be used by the service:

Code, *Reason* and *Value* belong to the namespace "http://www.w3.org/2003/05/soap-envelope".

SubCode belongs to the namespace "urn://Ocpp/2012/02/".

<i>Code</i>		<i>Reason</i>
<i>Value</i>	<i>SubCode</i>	
Sender	SecurityError	Sender failed authentication or is not authorized

Code		Reason
Value	SubCode	
		to use the requested operation.
Sender	IdentityMismatch	Sender sent the wrong identity value.
Sender	ProtocolError	Sender's message does not comply with protocol specification.
Receiver	InternalError	An internal error occurred and the receiver is not able to complete the operation.
Receiver	NotSupported	The receiver does not support the requested operation.

8.3 Mobile Networks

In cases where Charge Boxes uses an IP based mobile data network (GPRS, UMTS, HSPDA, etc.) to communicate with the Central System, it's possible that the Central System cannot initiate a network connection to a Charge Box directly. For example, a Network Operator may use dynamic IP addresses.

To overcome this problem, a Central System SHOULD send a SMS to a Charge Box. The SMS SHOULD contain the Charge Box identifier, but the SMS MAY also be empty. How an SMS is sent to an SMSC and delivered to the Charge Box is outside the scope of this specification. Upon receipt of a SMS, the Charge Box MUST send a Heartbeat.req PDU to the Central System with WS-Addressing header "From", with the URL of the Charge Box. See [WS-ADDR] for a description of the Web Service Addressing standard. The Central System SHOULD use this URL for sending a pending command to.

When Charge Boxes are deployed in a mobile network, the Charge Box SHOULD set its URL in the WS-Addressing "From" field when sending a request. This way a Central System can first try sending commands to the supplied URL, before waking up the Charge Box via SMS.

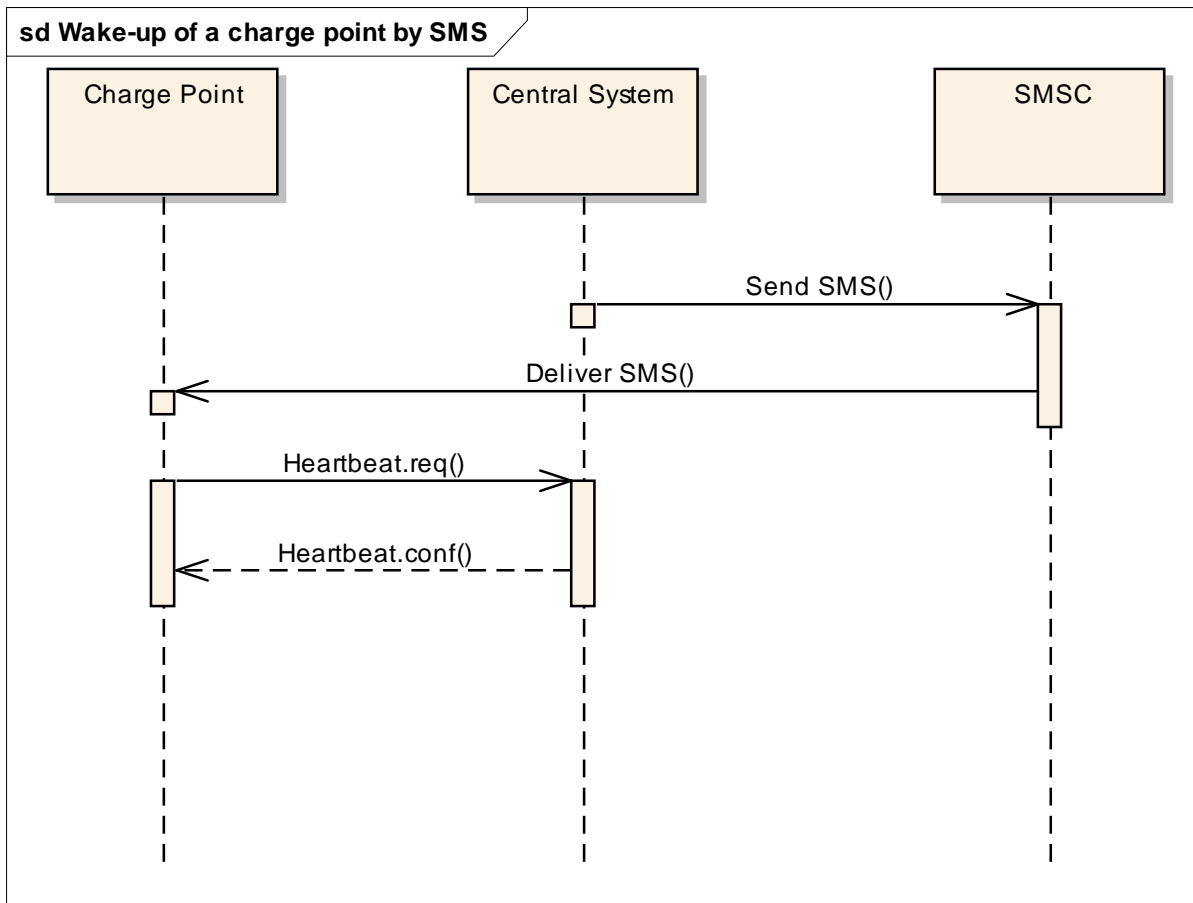


Figure: Wake-up of a charge point by SMS

8.4 Download Firmware

When a Charge Box is notified about new firmware, it needs to be able to download this firmware. The Central System supplies in the request an URL where the firmware can be downloaded. The URL also contains the protocol which must be used to download the firmware.

The firmware **MUST** be downloaded via FTP or FTPS. FTP(S) is a better optimized for large binary data than HTTP. Also FTP(S) has the ability to resume downloads. In case a download is interrupted, the Charge Box can resume downloading after the part it already has downloaded. The FTP URL is of format:

ftp://user:password@host:port/path in which the parts *user:password@*, *:password* or *:port* may be excluded.

To ensure that the correct firmware is downloaded, it is **RECOMMENDED** that the firmware is also digitally signed.

8.5 Upload Diagnostics

When a Charge Box is requested to upload a diagnostics file, the Central System supplies in the request an URL where the Charge Box should upload the file. The URL also contains the protocol which must be used to upload the file.

The diagnostics file **MUST** be uploaded via FTP or FTPS. FTP is a better optimized for large binary data than HTTP. Also FTP has the ability to resume uploads. In case an upload is interrupted, the Charge Box can resume uploading after the part it already has uploaded. The FTP URL is of format:

ftp://user:password@host:port/path in which the parts *user:password@*, *:password* or *:port* may be excluded.

8.6 Compression

In cases where bandwidth needs to be reduced, a communicating party can use of the HTTP capability of compressing data. HTTP defines a 'Content-Encoding' header, which contains the compression method.

The Charge Box and Central System **MAY** use HTTP compression. Compression can be performed on a HTTP request and/or response.

The Charge Box and Central System **MUST** support the 'gzip' and 'deflate' compression methods. These are the most common compression methods.

When using compression, one should take great care if indeed the message size decreases. If the message is small, then it's possible that the compression will increase the size.

8.7 Security

To avoid exposure of private sensitive data, the transport of SOAP messages **SHOULD** be secured with SSL/TLS (e.g. HTTPS).

For a receiving party to trust a received message, the sending party **SHOULD** use a client certificate.

8.8 WSDL

The versions of the WSDL descriptions corresponding to this OCPP description are:

- Central System service: <urn://Ocpp/Cs/2012/06/>
- Charge Point service: <urn://Ocpp/Cp/2012/06/>